



Aluminium meat rail system



MEAT RAIL SYSTEM IN ANODIZED ALUMINIUM

Made of high strength aluminium

20 micron anodized

Tailor made

Extremely easy to assemble

Uprights with adjustable base for perfect alignment

Hook capacity 150 / 300 kg each



Simplex meat rail





"THE ORIGINAL"

...Meat Rails since 1946

1946
Tonon's first meat rail
Mod. T50 made of steel



Aluminium self bearing structure



350 kg load capacity per linear metre



Stainless steel nuts and bolts

Meatrail Simplex for handling meat

Carrying quarters and half-beef / horse / pig / sheep without fatigue

Simplex's meatrail has the aim to carry and store in a cell the meat hung to it reducing to the minimum the stress for the operator, thanks also to a range of dedicated accessories unique in its kind.

Completely tailor made

This innovative transport system is used starting from the small butcher but can also be applied in a laboratory for boning, as in a supermarket or in a storage warehouse for meat wholesale. All this thanks to the modular system of Simplex's meat rail allowing our technical department, during the design phase, to optimize the space available making it suitable for any environment.

Maximum respect for hygiene

All products of Simplex's meat rail system series are stainless by default.

The non-toxic thermoplastic materials are of the highest quality.

Simplex's meat rail is 20 micron anodized aluminium.

All nuts and bolts are stainless steel as standard.

Safety first

In a work environment where heavy weights such as quarters or half beef are transported daily, security is fundamental. For this reason, our technical department develops customized projects that start from a load capacity of 350 kg up to even 700 kg per meter, always offering an easy movement of pulleys, a solid and supporting structure, oversized in order to guarantee high resistance to load and stress.

Also the eye wants its part

Simplex's meat rail system is liked for its lines: harmonious and sturdy at the same time.

Every detail has been designed to give continuity to the whole structures combined with various optional accessories that completes it.

The black / silver colours personalizes further more by giving an elegant and sophisticate touch.

Ease of assembly

The ease of assembly was then the reason who baptized the meat rail "Simplex" (easy in Latin).

In fact, being a modular structure allows to combine several products together without tying the exact location but conceding the possibility of adaptation and versatility; during the assembly in the construction site that means time and money saved.

In addition, a detailed working plan helps you to understand better what is meant to be the final result of the whole plant.

Ability to change over time

Thanks to the versatility of the whole system, the product quality and its durability, this meat rail allows changes (additions or substitutions of meat rail profile or adding new accessories) even after many years.

Price / quality ratio very good

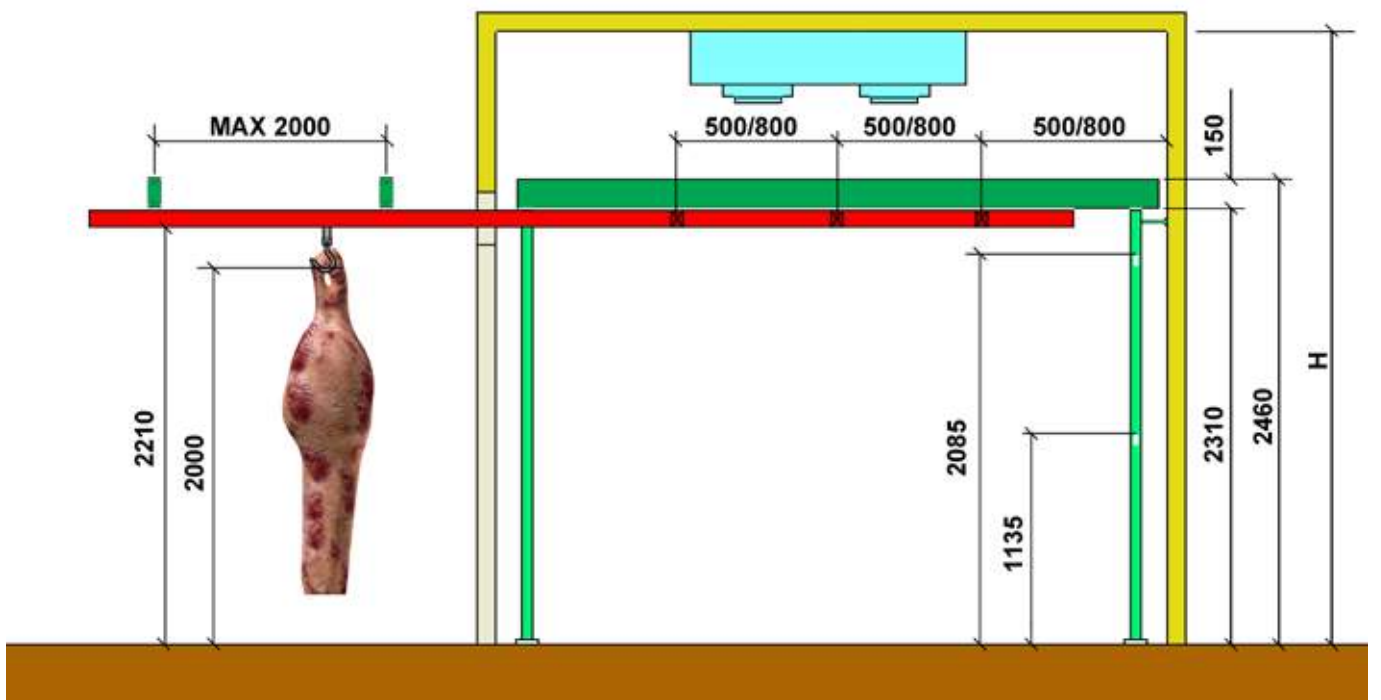
While considering the high constructive standard, Simplex's meat rail, thanks to the large amount of pieces, is able to fit into very competitive parameters.



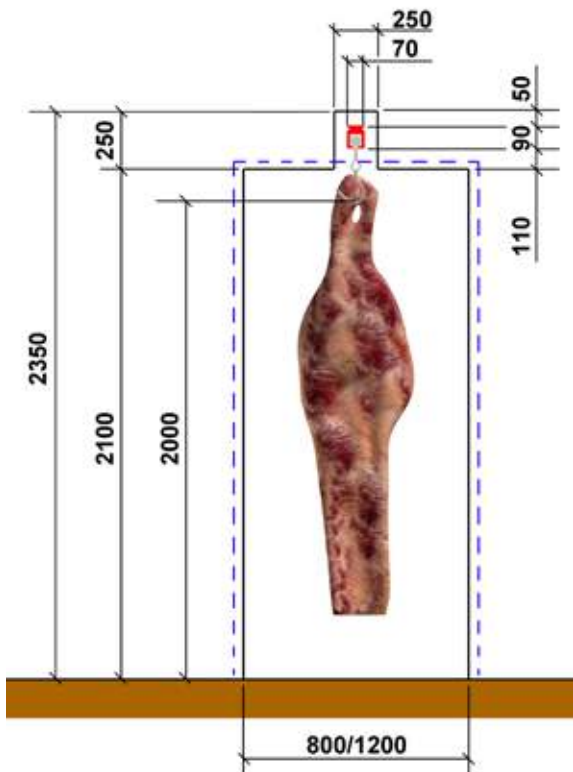
Meat rail dimensions

Dimensions in mm

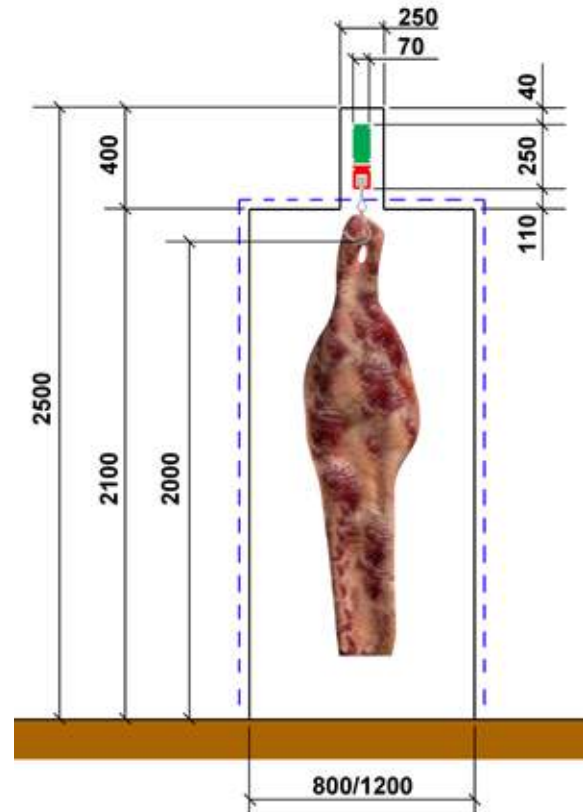
Cold room dimensions



Cold room door with transit for meat rail



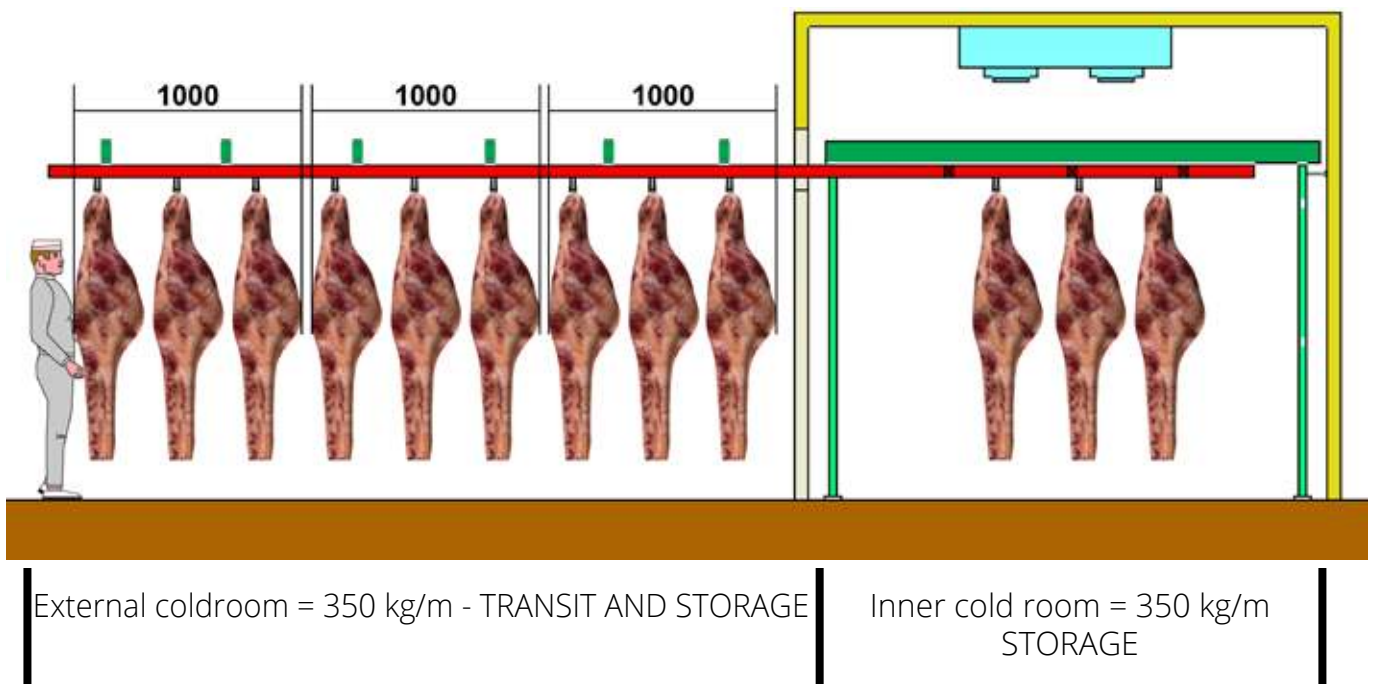
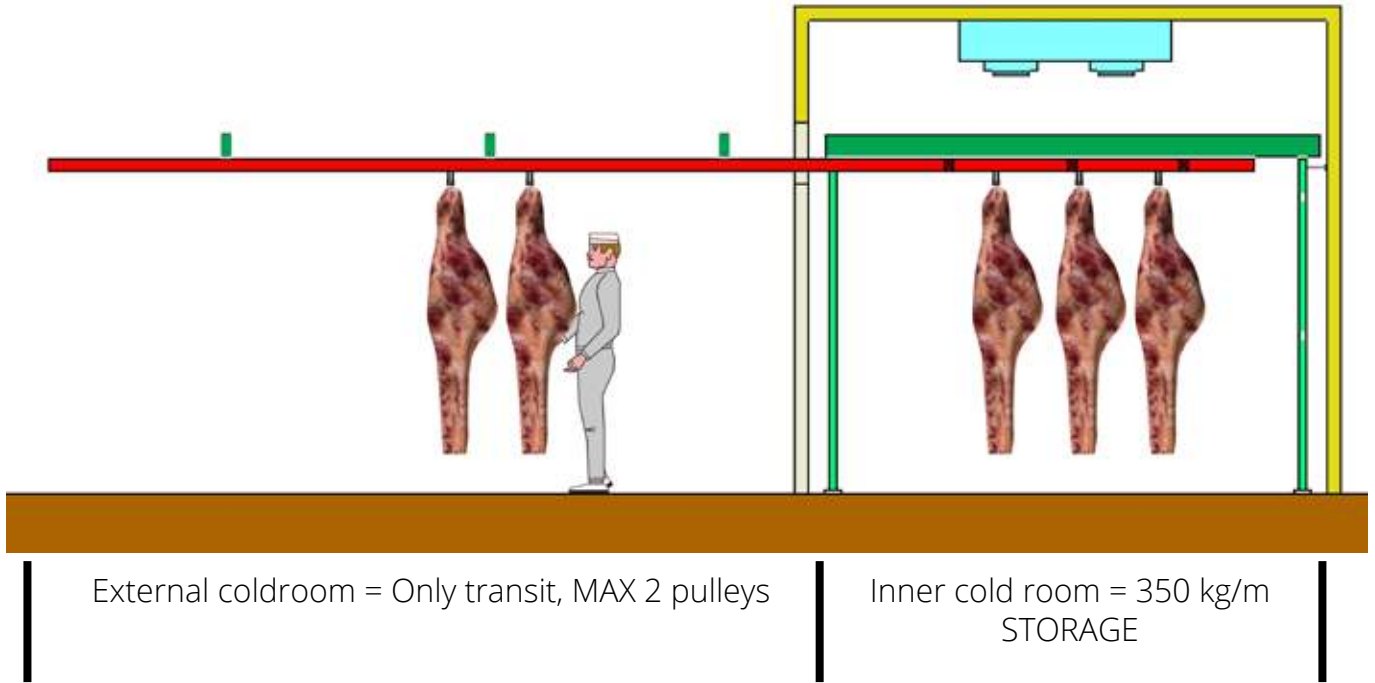
Cold room door with transit for meat rail + beam



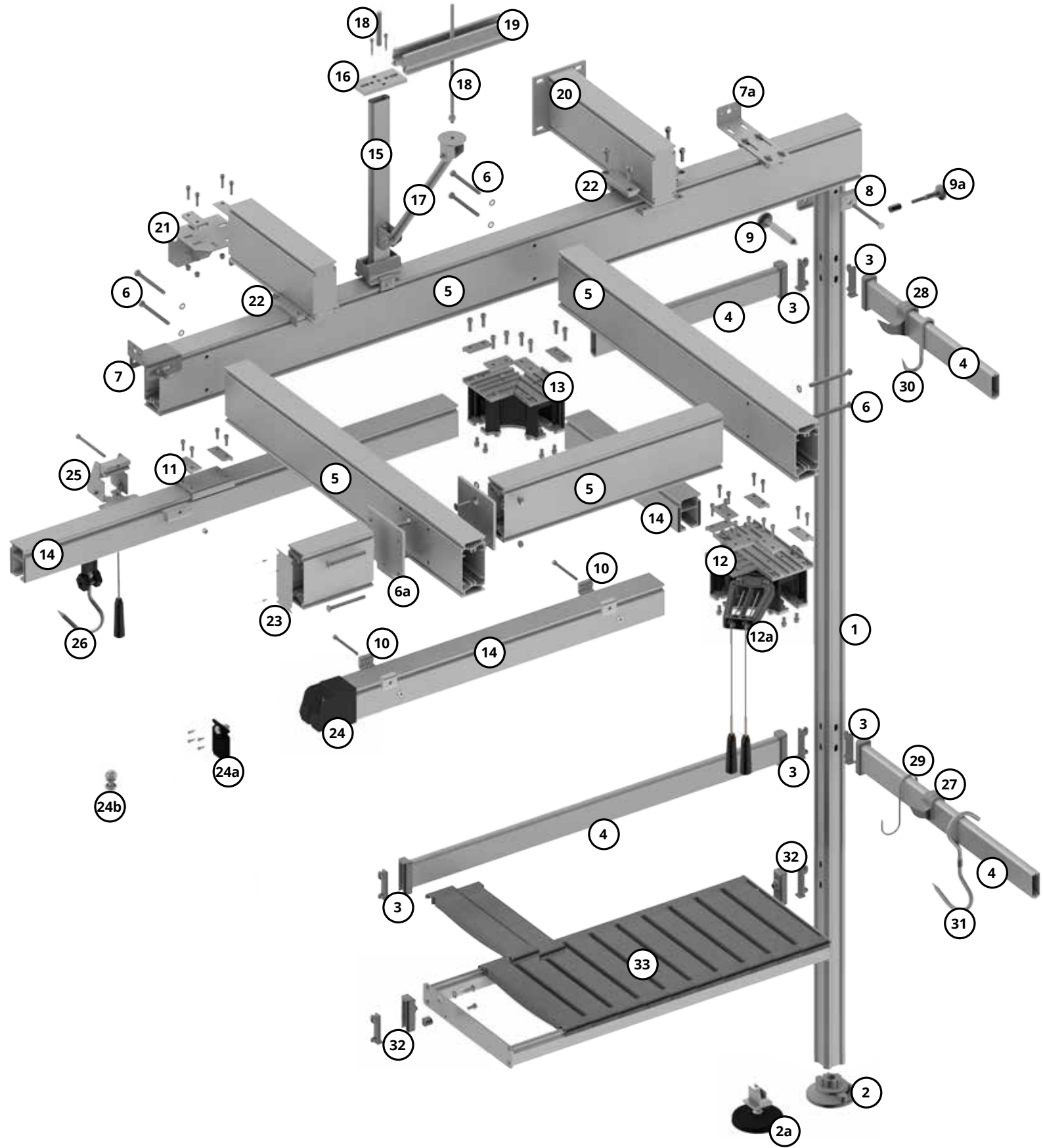


Walkaround Simplex

Meat rail loading plan



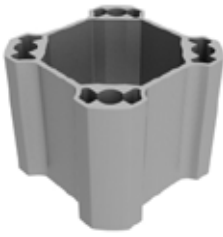
Meat rail technical specifications



1	Upright 62 x 62 mm in 20 micron anodized aluminium SPXM10 (82x82 mm - SPXM12)	16	Tie rods anchoring plate in 20 micron anodized aluminium SPX832 (direct anchoring to beams - SPX838)
2	Fixed base D120 mm in nylon 6 to insert in upright SPX220 (+ pair of clamps - SPX223)	17	Wall spacer tie rod H500 mm - SPXS35 (L-T) / H1000 mm - SPXS40 (L-T)
2a	Adjustable base D120 mm in nylon 6 to insert in upright SPX218 (+ pair of clamps - SPX219) (Upright 82x82 mm + pair of clamps - SPX262)	18	Stainless steel threaded rod D10 x 215 mm SPX060
3	Pair of fixing brackets in nylon 6 for hanging bar 75x25 mm SPX247	19	20 micron anodized aluminium beam for load distribution to ceiling (L. max 3000 mm) SPXM70
4	Hanging bar 75x25 mm in 20 micron anodized aluminium SPXM16	20	Stainless steel shelf for meat rail support, to be fixed to the wall L300 mm - SPX428 / L1000 mm - SPX432
5	Beam in 20 micron anodized aluminium H150 mm SPXM18 (Beam H230 mm - SPXM22)	21	Stainless steel shelf for aluminium beam support SPX420
6	"T" joint in stainless steel for beams H150 mm SPX350 (Per travi H230 - SPX365)	22	Cross joint in 20 micron anodized aluminium for overlapping aluminium beams SPX410
6a	Cross joints in 20 micron anodized aluminium H150 mm SPX380 (Beams H230 - SPX395)	23	Stainless steel plug for aluminium beam H150 mm - SPX330 (H230 mm - SPX342)
7	Stainless steel wall spacer longitudinal to the beam SPXS20 (L)	24	Steel terminal for pulley insertion SPX050
7a	Stainless steel wall spacer transversal to the beam SPXS20 (T)	24a	Tilting steel terminal for pulley insertion SPX049
8	Pair of clamps for upright/beam fixing SPX239 / SPX226 (+ fixed base - SPX223) (+ adj. base SPX219) (upright 82x82 mm + adj. base. D160 mm - SPX262)	24b	Stainless steel terminal pulley block on meat rail SPX048
9	Wall spacers in 20 micron anodized aluminium distance 150 mm SPXS25 (special distance - SPX225)	25	Stainless steel pulley block on SPX180
9a	Wall spacers in 20 micron anodized aluminium distance 90 mm SPXS25 (special distance - SPX225)	26	Pulley with stainless steel hook 150 kg - SPX150 (300 kg - SPX155)
10	Parallel clamps in 20 micron anodized aluminium for meat rail/beam fixing SPX055	27	Hook in thermoplastc material 50 kg load capacity SPX300
11	90° Cross clamp in 20 micron anodized aluminium for meat rail/beam fixing SPX057 (45° - SPX058)	28	Hook in thermoplastc material 100 kg load capacity SPX312
12	3-Way rotating switch with commands and brackets SPX070 (4-Way switch - SPX075)	29	"S" shaped stainless steel hook H160 x 6 mm SPX313
12a	Control ropes spacer for switches in thermoplastic material SPX078	30	Stainless steel hook for hanging bars 75 x 25 mm SPX314
13	90° bend SPX080 (45° - SPX082)	31	Stainless steel hook D12 mm SPX315
14	Meat rail H 90 x 70 mm in 20 micron anodized aluminium SPXM30 (cut only - SPXM32)	32	Pair of hinges for fixing the folding shelf on uprights SPX250
15	Ceiling mount tie rod in 20 micron anodized aluminium H500 mm SPXS34 (H1000 mm - SPXS39)	33	Folding shelf W375 mm with plastic slats SPXM50 (Aluminium slats - SPXM52)

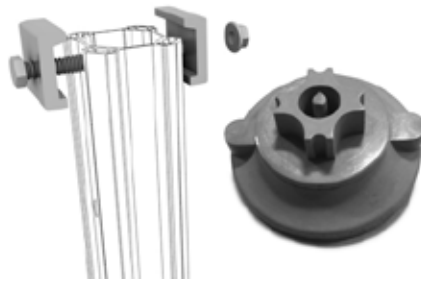
Uprights for meat rail

UPRIGHTS



SPXM10

Upright 62 x 62 mm tailor-made in 20 micron anodized aluminium



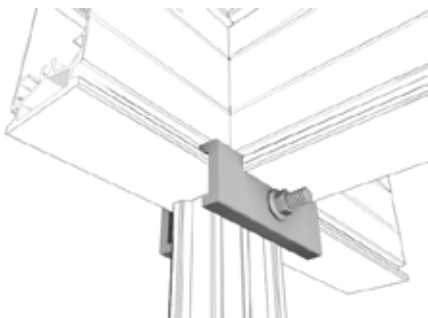
SPX223

Fixed base Ø 120 mm in nylon 6 for upright 62 x 62 mm + pair of clamps for upright 62 x 62 mm/beam fixing in 20 micron anodized aluminium



SPX219

Rotating adjustable base Ø 120 mm in 20 micron anodized aluminium for upright 62 x 62 mm + pair of clamps for upright 62 x 62 mm/beam fixing in 20 micron anodized aluminium



SPX226

Pair of clamps in 20 micron anodized aluminium for special fixing in "T" configuration upright 62 x 62 mm / beam



SPXS25

Wall spacers in 20 micron anodized aluminium



SPX225

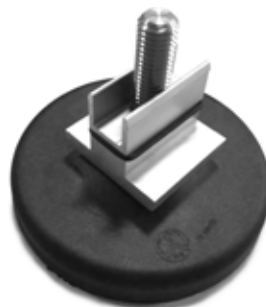
Wall spacer extension in 20 micron anodized aluminium for wall spacers for uprights 62 x 62 mm

SPARE PARTS FOR UPRIGHTS



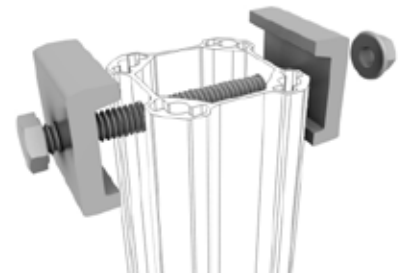
SPX220

Fixed base Ø 120 mm in nylon 6 for upright 62 x 62 mm



SPX218

Rotating adjustable base Ø 120 mm in 20 micron anodized aluminium for upright 62 x 62 mm



SPX239

Pair of clamps for upright 62 x 62 mm/beam fixing in 20 micron anodized aluminium

SPECIAL UPRIGHTS FOR MEAT RAIL



SPXM12

Upright 82 x 82 mm in 20 micron anodized aluminium

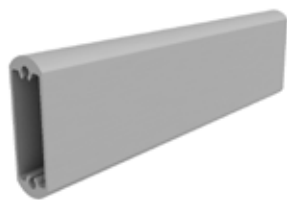


SPX262

Rotating adjustable base Ø 160 mm in 20 micron anodized aluminium for upright 82 x 82 mm + pair of clamps for upright 82 x 82 mm/aluminium beam H150 / H230 mm

Hangers for meat rail

Meat Rail System



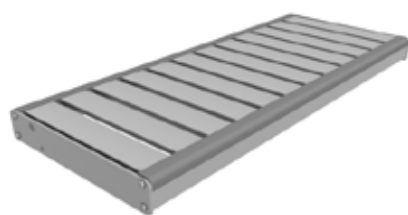
SPXM16
Hanging bar 75 x 25 mm in 20 micron anodized aluminium



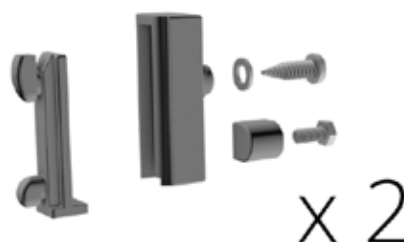
SPX247
Pair of fixing brackets for hanging bar 75 x 25 mm in nylon 6 with upright 62 x 62 mm



SPXM50
Folding plastic shelf width 375 mm (SPX250 not included)



SPXM52
Folding aluminium shelf width 375 mm (SPX250 not included)



SPX250
Pair of hinges for folding shelf in nylon 6 for upright 62 x 62 mm in 20 micron anodized aluminium

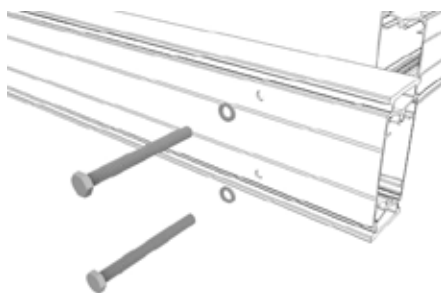


SPXM50 + SPX250

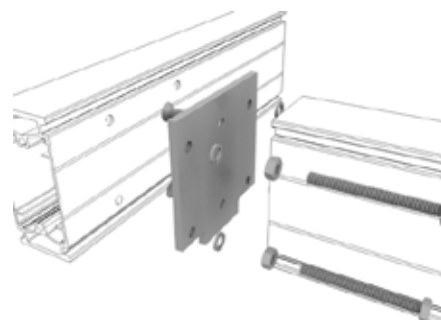
Structures for meat rail



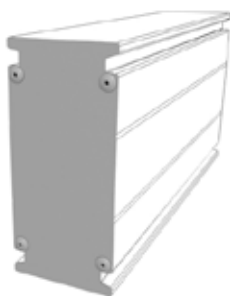
SPXM18
Beam H 150 x 70 mm in 20 micron
anodized aluminium



SPX350
"T" joint in stainless steel for aluminium
beams H 150 mm



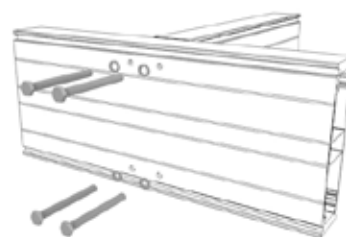
SPX380
Cross joints H 150 mm
in 20 micron anodized aluminium



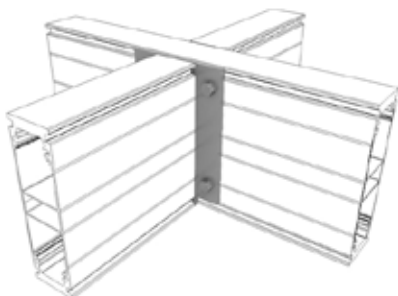
SPX330
Stainless steel plug for aluminium beam
H 150 mm



SPXM22
Beam H 230 x 70 mm in 20 micron
anodized aluminium



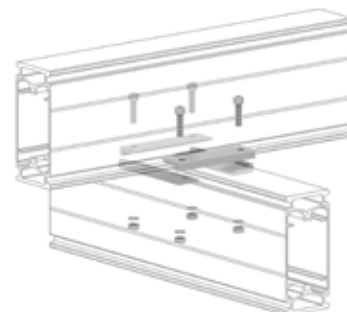
SPX365
"T" joint in stainless steel for aluminium
beams H 230 mm



SPX395
Cross joints H 230 mm
in 20 micron anodized aluminium



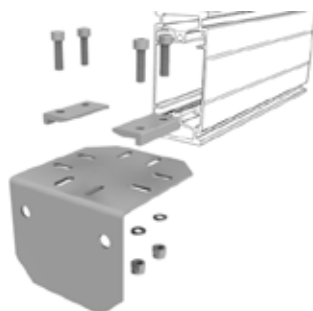
SPX342
Stainless steel plug for aluminium
beam H 230 mm



SPX410
Cross joint in 20 micron anodized aluminium
for overlapping aluminium beams



SPXS20
Stainless steel wall spacer brachet for beams
(L) longitudinal or (T) transversal to the meat rail



SPX420
Stainless steel shelf for aluminium beam support.
To be fixed to the wall (plugs not included)

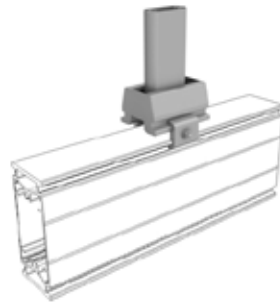


SPX428
Stainless steel shelf depth 300 mm for meat rail
support, to be fixed to the wall (plugs not included)

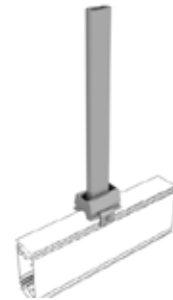
SPX432
Stainless steel shelf depth 1000 mm for meat rail
support, to be fixed to the wall (plugs not included)



SPXS32
Direct ceiling joint H 60 mm in 20 micron anodized aluminium



SPXS33
Ceiling mount tie rod H 120 mm in 20 micron anodized aluminium



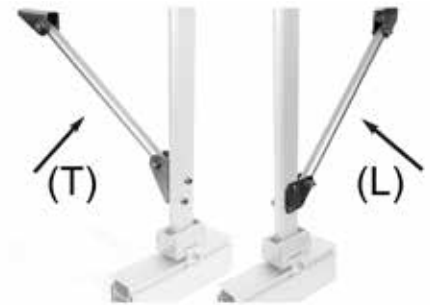
SPXS34
Ceiling mount tie rod H 500 mm in 20 micron anodized aluminium



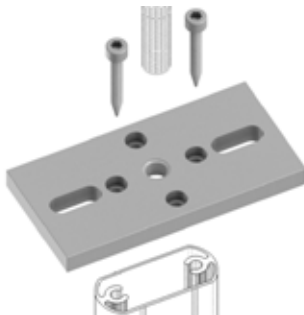
SPXS39
Ceiling mount tie rod H 1000 mm in 20 micron anodized aluminium



SPXS35
Wall spacer tie rod H 500 mm (L) longitudinal or (T) transversal in 20 micron anodized aluminium



SPXS40
Wall spacer tie rod H 1000 mm (L) longitudinal or (T) transversal in 20 micron anodized aluminium



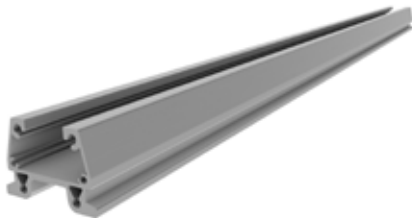
SPX832
Tie rods anchoring plate for ceiling fixing (plugs not included) in 20 micron anodized aluminium



SPX838
Tie rods anchoring plate to IPE beams 100-160 mm in 20 micron anodized aluminium



SPX060
Stainless steel threaded rod 10MAx215 mm for direct ceiling joint



SPXM70
20 micron anodized aluminium beam for load distribution to ceiling H60 x 68 mm (max length 3000 mm)

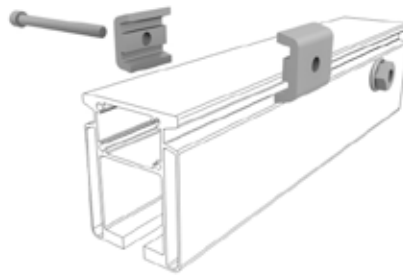


Meat rail, switches, curves

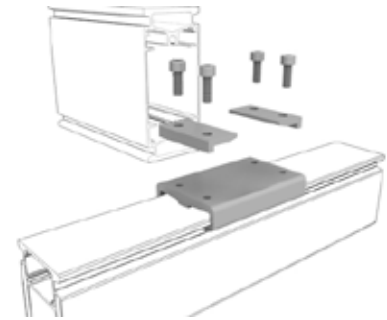
ALUMINIUM MEAT RAIL



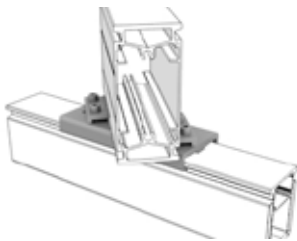
SPXM30
Meat rail H 90 x 70 mm in 20 micron anodized aluminium



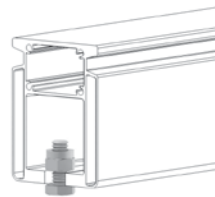
SPX055
Parallel clamps in 20 micron anodized aluminium for meat rail/beam fixing



SPX057
Cross clamp in 20 micron anodized aluminium for meat rail/beam fixing



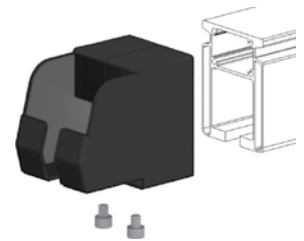
SPX058
45° Cross clamp in 20 micron anodized aluminium for meat rail/beam fixing



SPX048
Stainless steel terminal pulley block on meat rail



SPX049
Tilting steel terminal for pulley insertion



SPX050
Steel terminal for pulley insertion

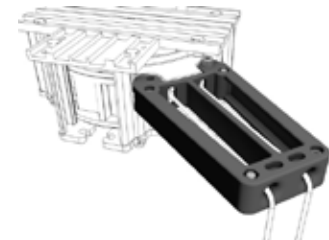
SWITCHES FOR MEAT RAIL



SPX070
3-Way rotating switch Ø 200 mm in 20 micron anodized aluminium

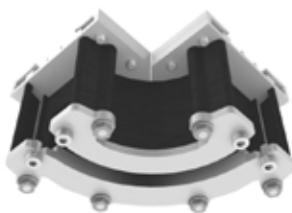


SPX075
4-Way rotating switch Ø 200 mm in 20 micron anodized aluminium

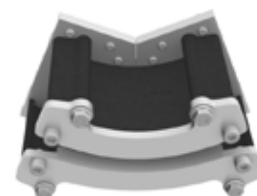


SPX078
(optional)
Control ropes spacer for 3 or 4 switch in thermoplastic material

CURVES FOR MEAT RAIL



SPX080
90° bend Ø 200 mm in 20 micron anodized aluminium

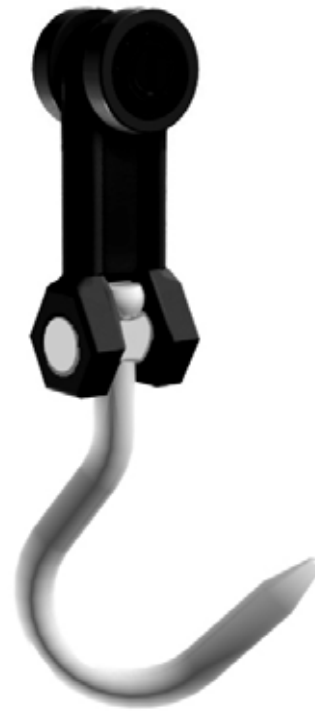


SPX082
45° bend Ø 200 mm in 20 micron anodized aluminium



SPX150

SIMPLEX pulley, 150 kg load capacity with hook Ø 12 mm in stainless steel



SPX155

SIMPLEX pulley, 300 kg load capacity with hook Ø 15 mm in stainless steel



SPX300

Hook in thermoplastic material 50 kg load capacity for hanging bars



SPX312

Hook in thermoplastic material 100 kg load capacity for hanging bars



SPX313

"S" shaped stainless steel hook H 160 mm, Ø 6 mm, for hanging bars



SPX314

Stainless steel hook Ø12 mm, for hanging bars



SPX315

"S" shaped stainless steel swivelling hook H270 mm, Ø12 mm, for hanging bars

Quarter beef trolleys



SPX910

Quarter beef trolley in 20 micron anodized aluminium with fixed hooks

The quarter beef trolley with fixed hooks was made to transport big pieces from the unloading area to the cold room.

Made with 20 micron anodized aluminium is perfect for the direct food contact.

Its wheels, Ø 125 mm, with brakes, in thermoplastic material allow smoothing scrolling and high stability of the trolley.

Maximum dimensions 1400 x 770 x H 2200 mm



SPX920

Cover for SPX910 in PVC coated polyester



SPX914

Quarter beef trolley in 20 micron anodized aluminium with pulleys

The quarter beef trolley with fixed hooks was made to transport big pieces from the unloading area to the cold room.

Made with 20 micron anodized aluminium is perfect for the direct food contact.

Its wheels, Ø 125 mm, with brakes, in thermoplastic material allow smoothing scrolling and high stability of the trolley.

Pulleys are fixed to prevent accidental movements, there is also a connection between the trolley and the meat rail.

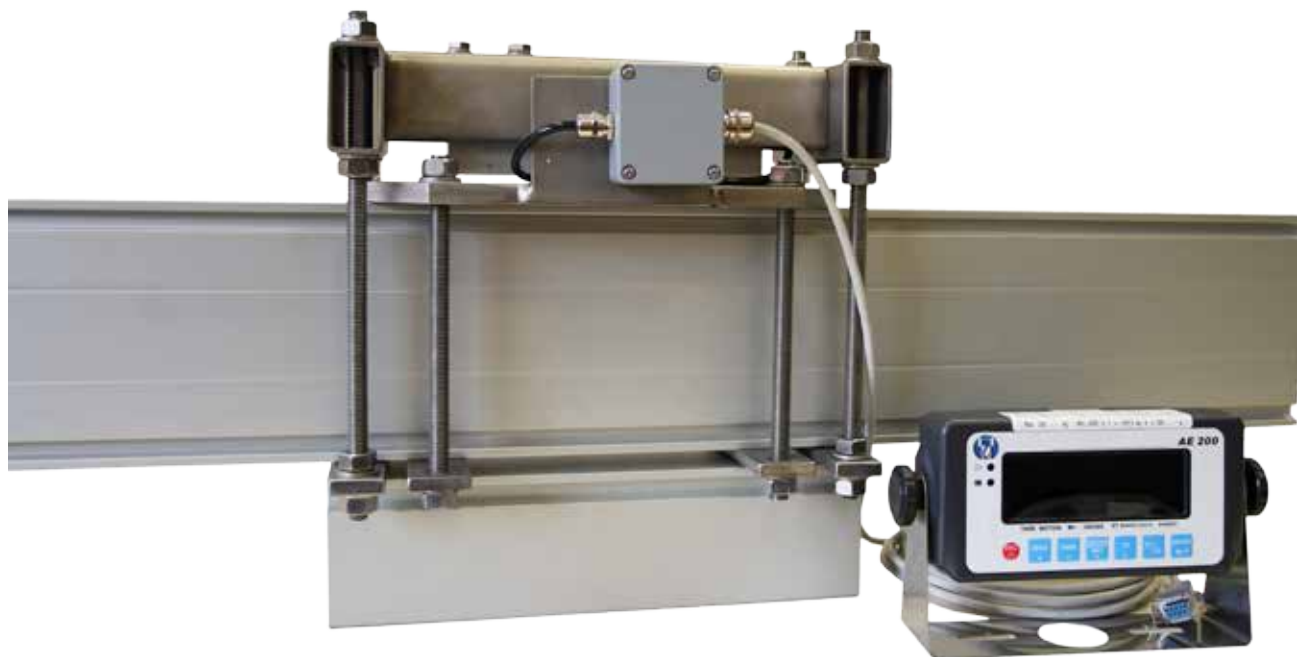
Max load capacity. 400 kg

Maximum dimensions 1400 x 770 x H 2550 mm



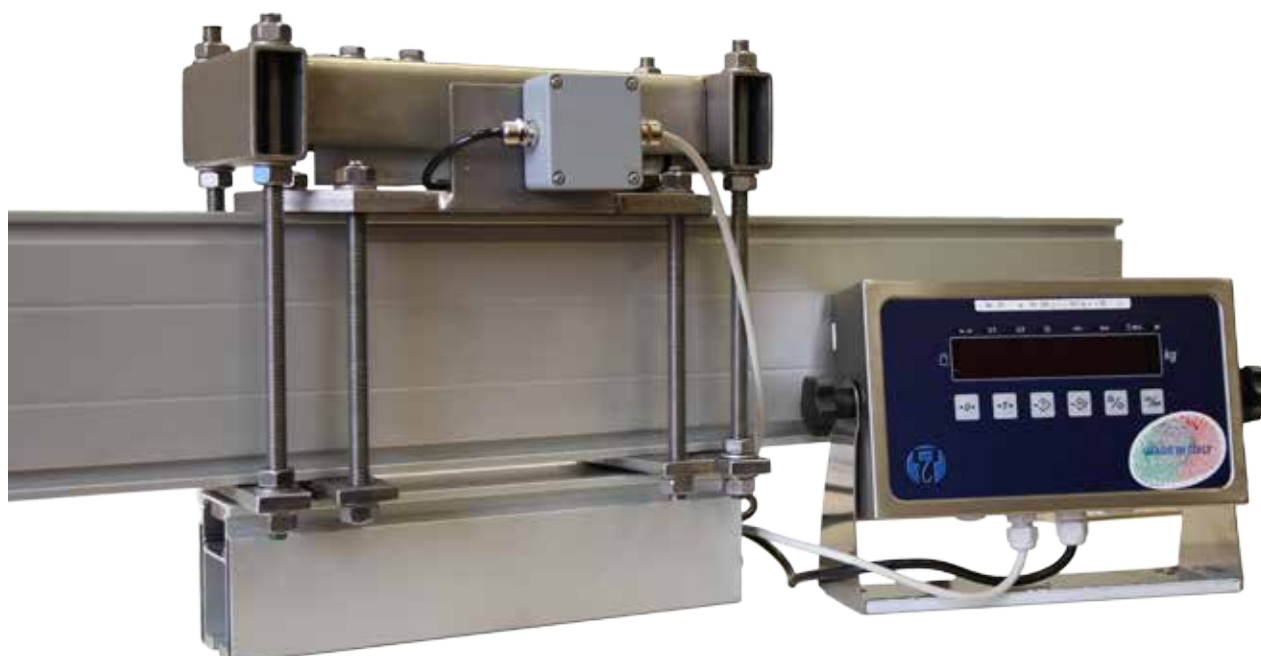
SPX922

Cover for SPX914 in PVC coated polyester



SPX215
Electronic scale in stainless steel 300 kg with
electronic display IP 44, not homologated

(Homologation possible by request) .
Designed to be attached directly to the structure of the meat rail.
It allows you to weigh directly from the meat rail the hanging meat.
Supplied pre-assembled and calibrated.
Weighing length 330 mm.



SPX216
Electronic scale in stainless steel 300 kg with electronic display IP 65
Homologated

Designed to be attached directly to the structure of the meat rail.
It allows you to weigh directly from the meat rail the hanging meat.
Supplied pre-assembled and calibrated.
Weighing length 330 mm.

Loading devices on meat rail

SPX113 Terminal loading device with electric hoist, load capacity 200 kg.

Designed to be attached directly to the head of the supporting structure and to work in harmony with our meat rail system Simplex.

Eliminates operator fatigue in the daily operations of raising and lowering the meat on the conveyor.

Structure completely in 20 micron anodized aluminium.

Equipped with safety lock to prevent the fall of the meat during normal operations.

Pre-mounted on the meat rail system.



SPX103 Central loading device with electric hoist, load capacity 200 kg.

Designed to be attached directly to the head of the supporting structure and to work in harmony with our meat rail system Simplex.

Eliminates operator fatigue in the daily operations of raising and lowering the meat on the conveyor.

Structure completely in 20 micron anodized aluminium.

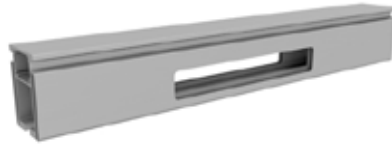
Equipped with safety lock to prevent the fall of the meat during normal operations.

Pre-mounted on the meat rail system.

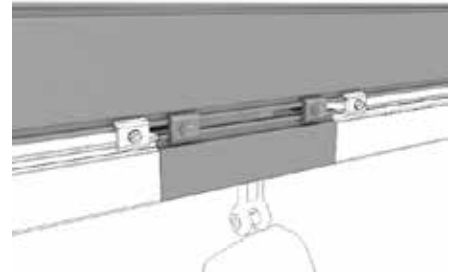




SPX180
Stainless steel pulley block on rail



SPXS30
Terminal cut on meat rail for cold room door



SPXS10
Arrangement in 20 micron anodized aluminium for scale installation on rail (tailor made measures)



SPX115
Electric hoist, 125 kg load capacity



SPX118
Electric hoist, 200 kg load capacity



SPX119
Steel trolley with in-pipe support for electric hoist



SPX120
Stainless steel support arm for hoist fixing to beams



SPX122
Stainless steel hook for standard electric hoist



SPX128
Manual folding rail extension for meat reception in 20 micron anodized aluminium

Accessories for meat rail



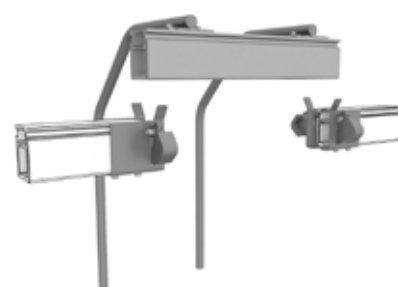
SPX132

Lift rail section in 20 micron anodized aluminium for forklifts transit



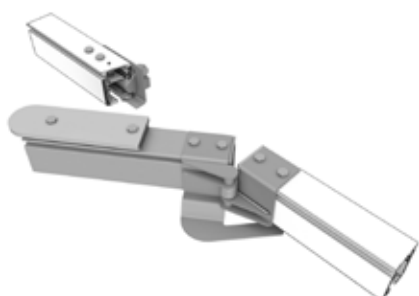
SPX140

Manual removable rail extension in 20 micron anodized aluminium



SPX141

Manual removable rail extension with stainless steel handles



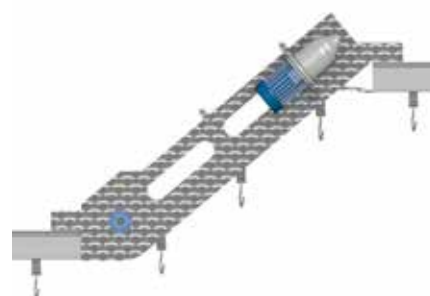
SPX142

Flag for meat rail in 20 micron anodized aluminium



SPXS80

Lowering rail section in 20 micron anodized aluminium



SPXS90

Lowering rail conveyor in stainless steel



SPX068

Bracket for embossed meat rail + upright 62 x 62 mm fixing kit (max. length 1500 mm) in 20 micron anodized aluminium



SPX064

Linear meat rail joint in 20 micron anodized aluminium



SPX147

Stainless steel expander



GRIC15

Stainless steel crane with articulated arm

Zinc-plated frames for meat rail structure



SGL125

Rotating adjustable base Ø 160 mm for upright 82 x 82 mm +
Pair of fixing clamps upright / beams 140-180

SGL126

Rotating adjustable base Ø 160 mm for upright 82 x 82 mm +
Pair of fixing clamps upright / beams 200-220

SGL127

Rotating adjustable base Ø 160 mm for upright 82 x 82 mm +
Pair of fixing clamps upright / beams 240-300



GLDM05

Hot dip galvanized iron dip IPE 140

GLDM09

Hot dip galvanized iron dip IPE 220

GLDM06

Hot dip galvanized iron dip IPE 160

GLDM10

Hot dip galvanized iron dip IPE 240

GLDM07

Hot dip galvanized iron dip IPE 180

GLDM11

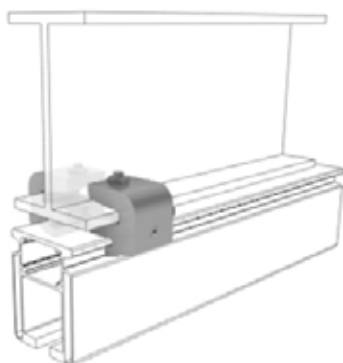
Hot dip galvanized iron dip IPE 240

GLDM08

Hot dip galvanized iron dip IPE 200

GLDM12

Hot dip galvanized iron dip IPE 300



SGL060

Galvanized iron parallel clamp rail / beams IPE 140

SGL062

Galvanized iron parallel clamp rail / beams IPE 160-180

SGL064

Galvanized iron parallel clamp rail / beams IPE 200-240

SGL066

Galvanized iron parallel clamp rail / beams IPE 270-300



SGL070

Galvanized iron cross clamp rail / beams IPE 140-180

SGL071

Galvanized iron cross clamp rail / beams IPE 140-180

SGL072

Galvanized iron cross clamp rail / beams IPE 240-300



SGL120

Aluminium cross bracket IPE 140-180 with aluminium beams on different levels

SGL121

Aluminium cross bracket IPE 200-220 with aluminium beams on different levels

SGL122

Aluminium cross bracket IPE 240-300 with aluminium beams on different levels





Aluminium framework



ALUMINIUM FRAMEWORK

Made of high strength aluminium

20 micron anodized

Ideal also for medium and big load capacities

Tailor made

Extremely easy to clean

Piantane con basi regolabili

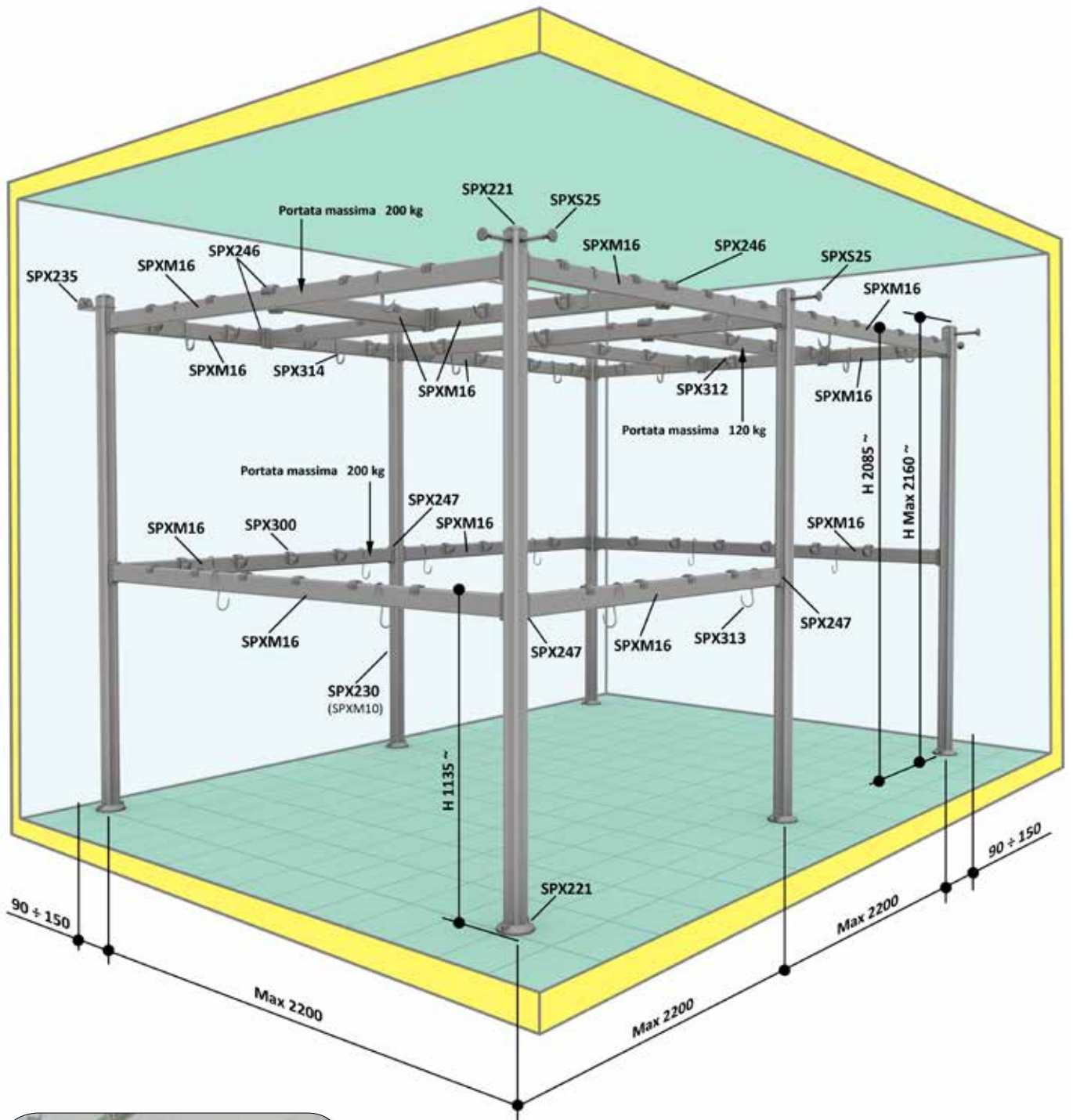
Load capacity hook 50 / 100 kg each



Dimensions

Aluminium framework

Dimensions in mm



Folding shelf available for hangers



Simplex framework for handling meat

Completely tailor made

This innovative storage system is used as an alternative to the meat rail system and has, as its purpose, the storage in cold room of cattle, pigs, sheep, horses.

All this thanks to the modular system of the Simplex framework that allows us, during the design phase, to optimize the space available making it suitable for any environment.

Maximum respect for hygiene

All products of Simplex's framework system are stainless by default.

The non-toxic thermoplastic materials are of the highest quality.

Simplex's framework is 20 micron anodized aluminium.

All nuts and bolts are stainless steel as standard.

Safety first

In a work environment where heavy weights are transported daily, security is fundamental.

For this reason, our technical department develops customized projects in order to guarantee high resistance to load and stress.

Also the eye wants its part

Simplex's framework system is liked for its lines: harmonious and sturdy at the same time.

Every detail has been designed to give continuity to the whole structures combined with various optional accessories that completes it.

Ease of assembly

The ease of assembly was then the reason who baptized the meat rail "Simplex" (easy in Latin).

In fact, being a modular structure allows to combine several products together without tying the exact location but conceding the possibility of adaptation and versatility; during the assembly in the construction site that means time and money saved.

In addition, a detailed working plan helps you to understand better what is meant to be the final result of the whole plant.

Ability to change over time

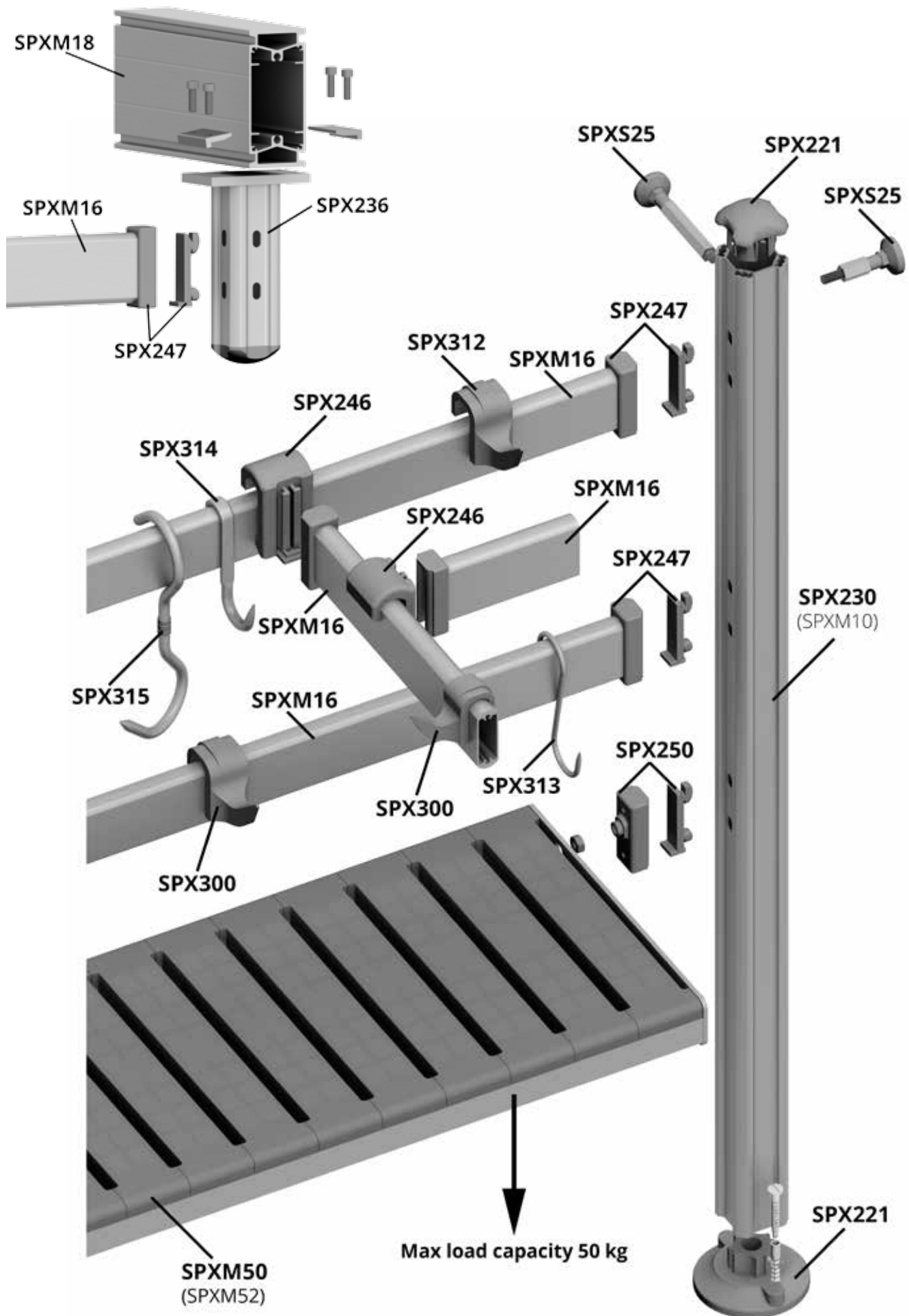
Thanks to the versatility of the whole system, the product quality and its durability, this meat rail allows changes (additions or substitutions of meat rail profile or adding new accessories) even after many years.

Price / quality ratio very good

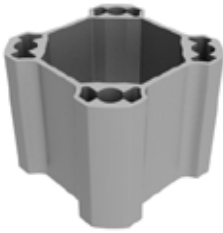
While considering the high constructive standard, Simplex's framework, thanks to the large amount of pieces, is able to fit into very competitive parameters.



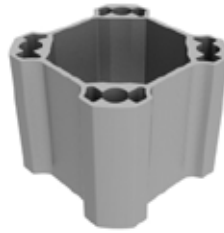
Framework technical specifications



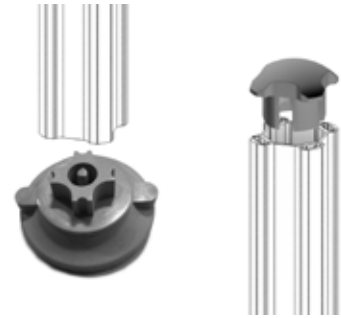
UPRIGHTS FOR FRAMEWORKS



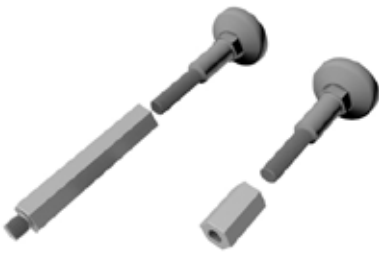
SPXM10
Upright 62 x 62 mm tallmade in 20 micron anodized aluminium



SPX230
Upright 62 x 62 mm H 2160 mm in 20 micron anodized aluminium



SPX221
Fixed base Ø 120 mm in thermoplastic material for upright 62 x 62 mm + plug for upright 62 x 62 mm in thermoplastic material



SPXS25
Wall spacers in 20 micron anodized aluminium

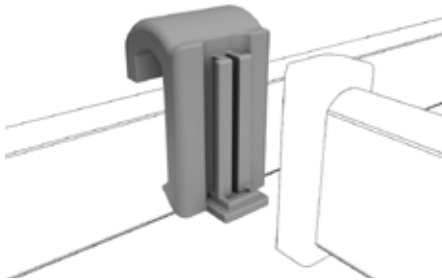


SPX225
Wall spacer extension in 20 micron anodized aluminium for wall spacers for uprights 62 x 62 mm

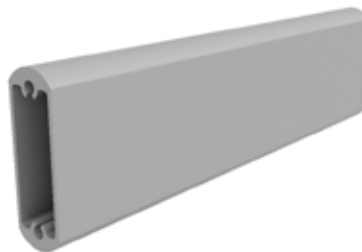


SPX235
Wall fixing stainless steel bracket for upright (rivet or threaded plug 10MA not included)

HANGES FOR FRAMEWORKS



SPX246
Clamps for hanging bars 75 x 25 mm to hanging bars 75 x 25 mm in thermoplastic material



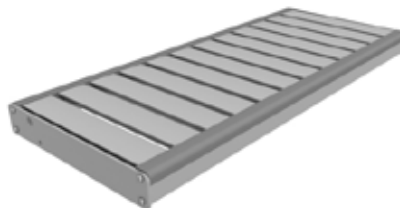
SPXM16
Hanging bar 75 x 25 mm in 20 micron anodized aluminium



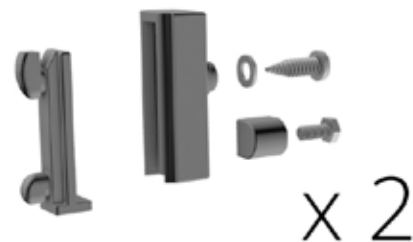
SPX247
Pair of fixing brackets for hanging bar 75 x 25 mm in nylon 6 with upright 62 x 62 mm



SPXM50
Folding plastic shelf width 375 mm (SPX250 not included)



SPXM52
Folding aluminium shelf width 375 mm (SPX250 not included)

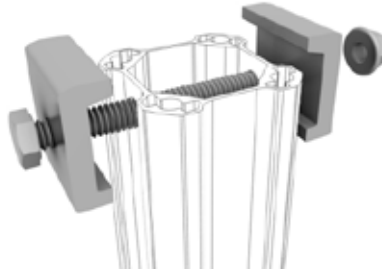


SPX250
Pair of hinges for folding shelf in nylon 6 for upright 62 x 62 mm in 20 micron anodized aluminium

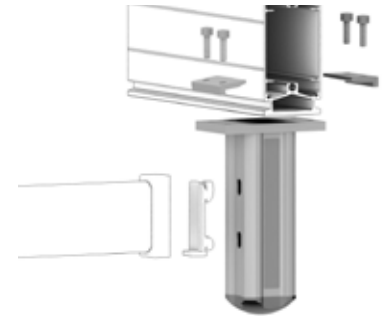
FRAMEWORK STRUCTURES



SPXM18
Beam H 150 x 70 mm in 20 micron
anodized aluminium



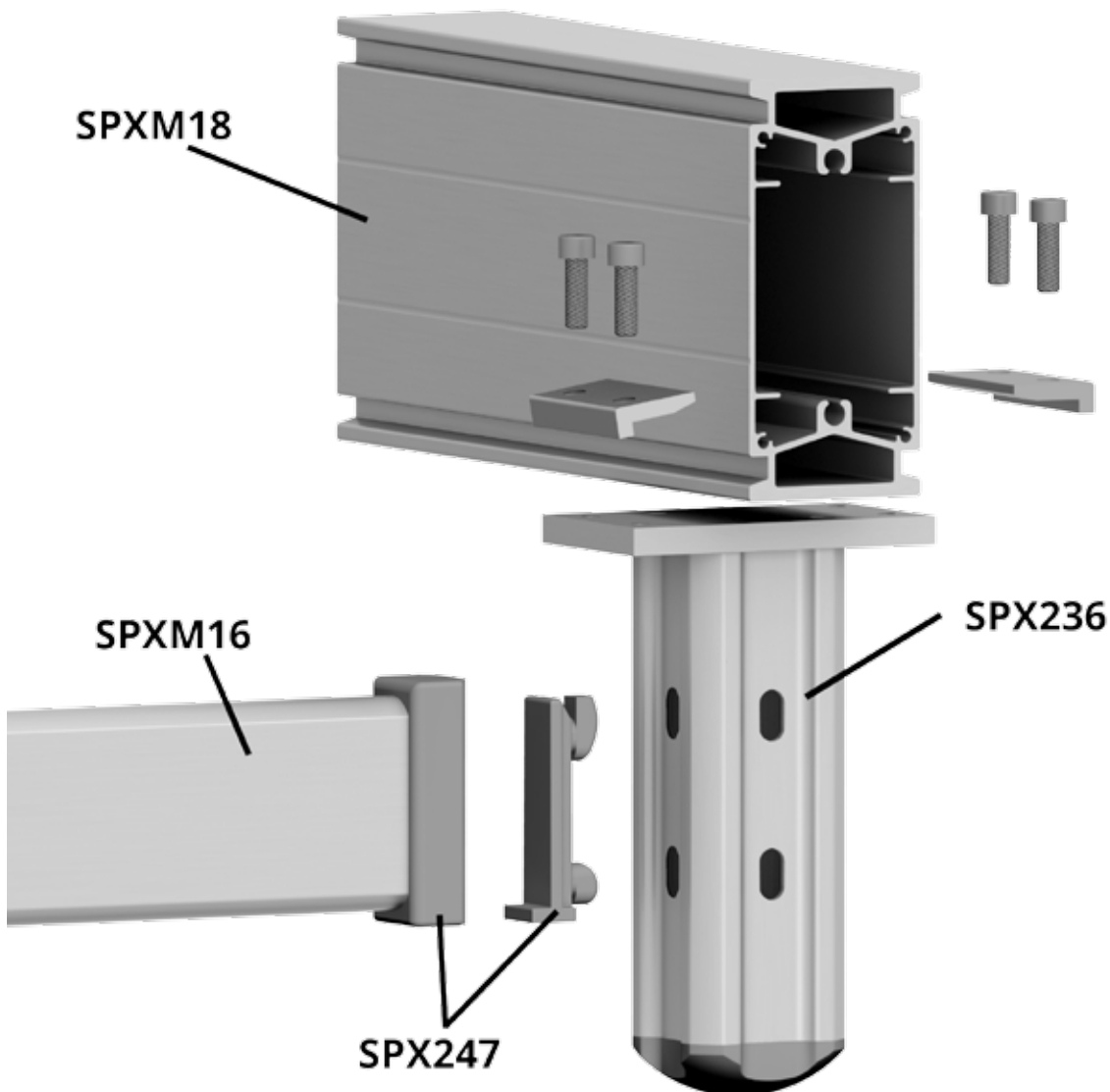
SPX239
Pair of clamps for upright 62 x 62 mm/beam fixing
in 20 micron anodized aluminium



SPX236
Central bracket hanging bar 75 x 25 mm with
anodized aluminium beam H 150 mm in 20 micron
anodized aluminium

**System for the use of upper hanging bars in the middle of a cold room,
without the post on the ground**

By adding to the normal framework system (beams resting on perimetric fixed posts) a central suspension, you can add new hanging bars towards the center of the coldroom, removing any kind of floor obstruction.



Central bracket assembly plan

HOOKS FOR FRAMEWORKS



SPX300

Hook in thermoplastic material 50 kg load capacity for hanging bars



SPX312

Hook in thermoplastic material 100 kg load capacity for hanging bars



SPX313

"S" shaped stainless steel hook H 160 mm, Ø 6 mm, for hanging bars



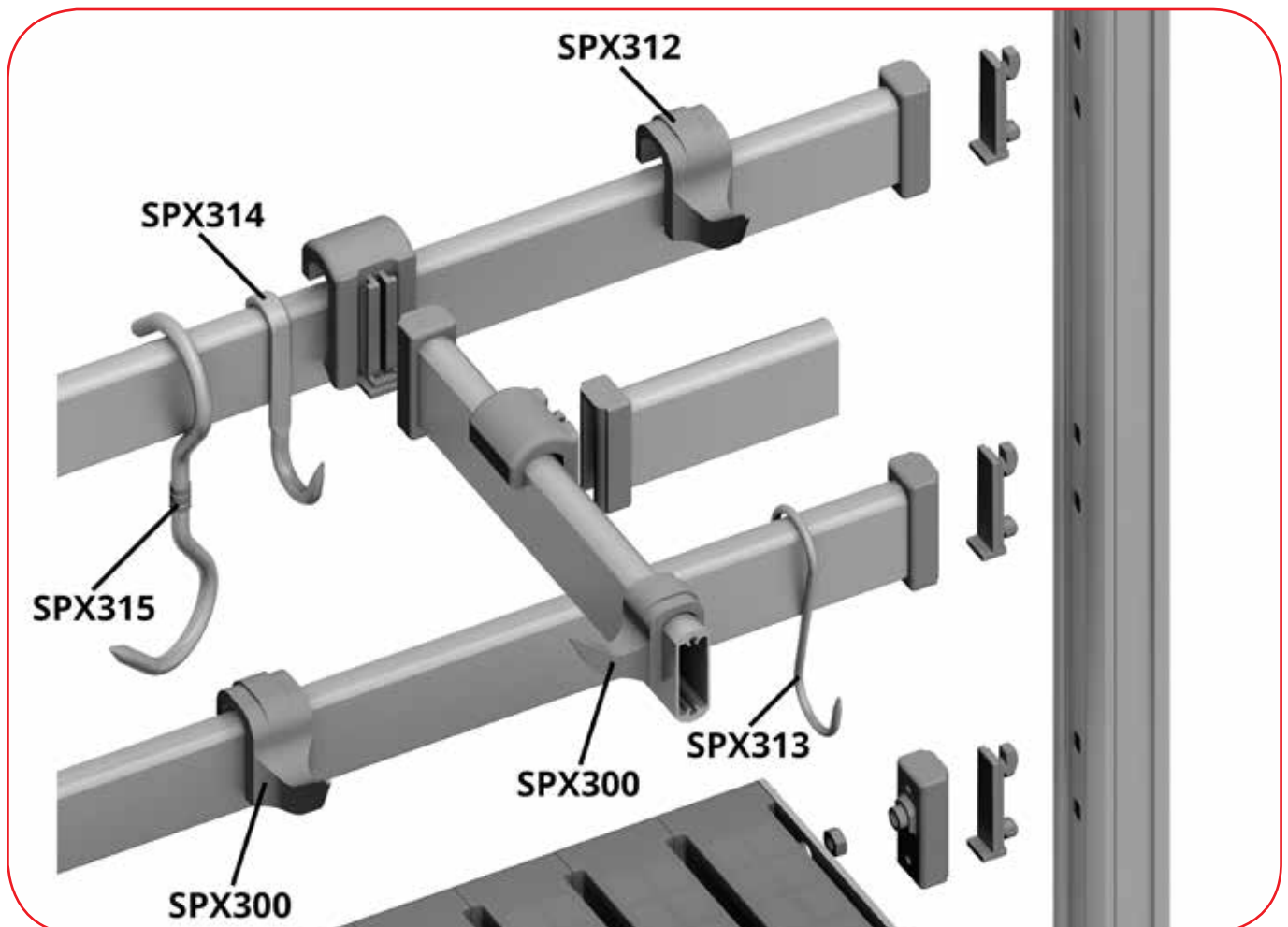
SPX314

Stainless steel hook Ø12 mm, for hanging bars



SPX315

"S" shaped stainless steel swivelling hook H270 mm, Ø12 mm, for hanging bars



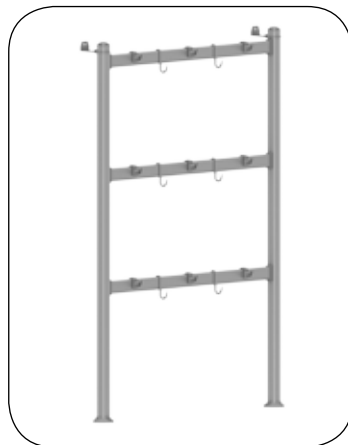
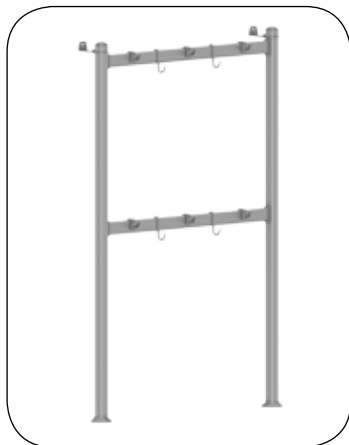
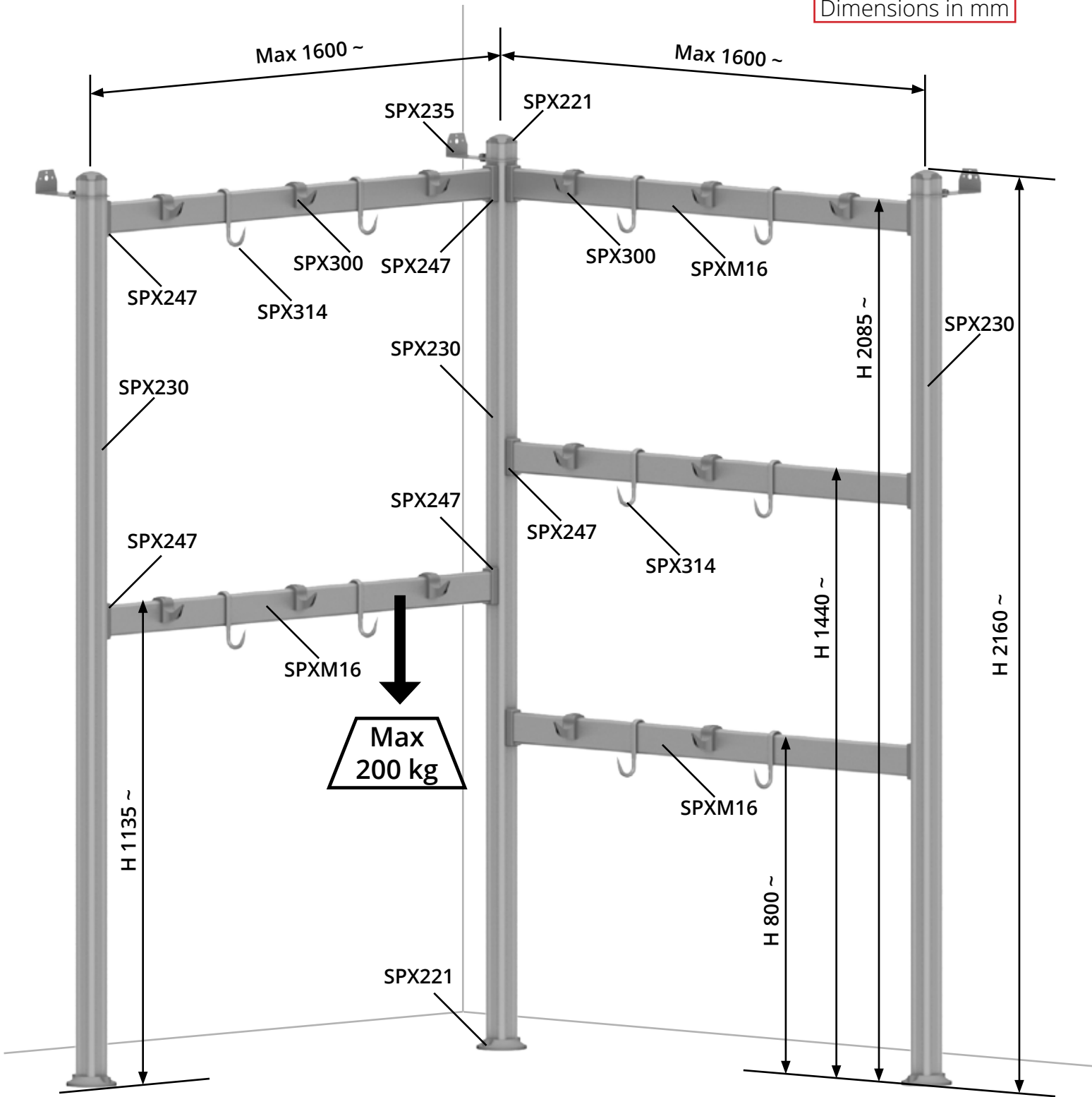


Aluminium
hangers



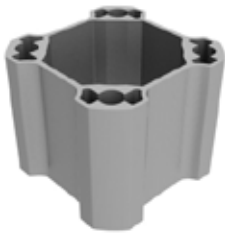
Floor / wall hangers mounted on uprights

Dimensions in mm

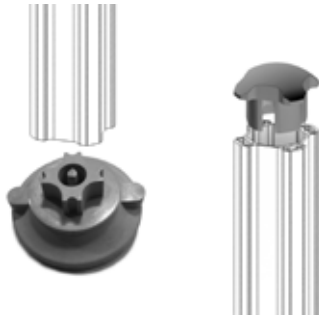


Floor / wall

Hangers mounted on uprights



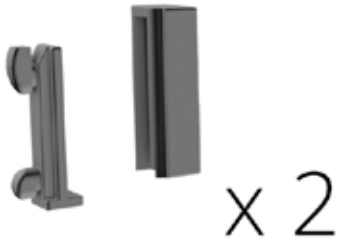
SPX230
Upright 62 x 62 mm H 2160 mm in
20 micron anodized aluminium



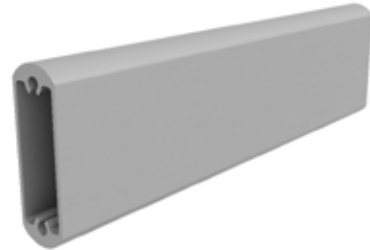
SPX221
Fixed base Ø 120 mm in thermoplastic material for
upright 62 x 62 mm + plug for upright 62 x 62 mm
in thermoplastic material



SPX235
Wall fixing stainless steel bracket for upright
(rivet or threaded plug 10MA not included)



SPX247
Pair of fixing brackets for hanging bar 75 x 25 mm in nylon 6 with
upright 62 x 62 mm



SPXM16
Hanging bar 75 x 25 mm in 20 micron
anodized aluminium



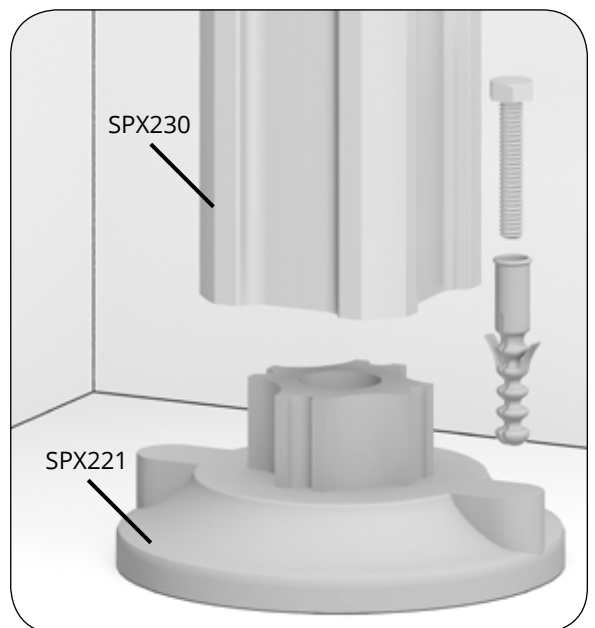
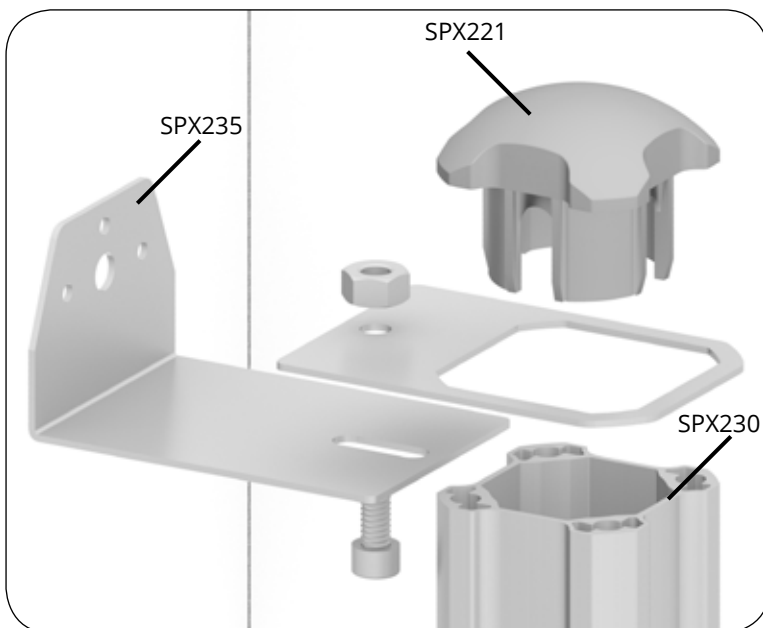
SPX300
Hook in thermoplastic material 50 kg load capacity
for hanging bars



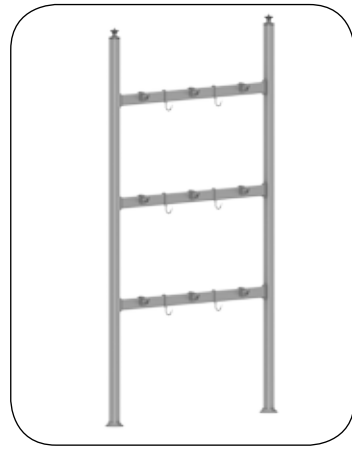
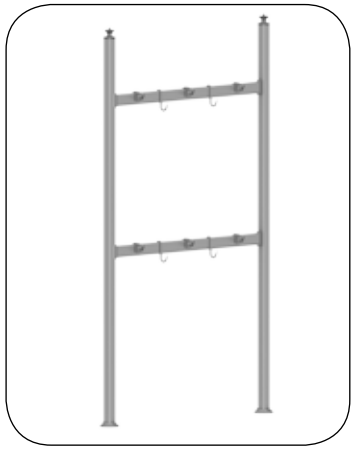
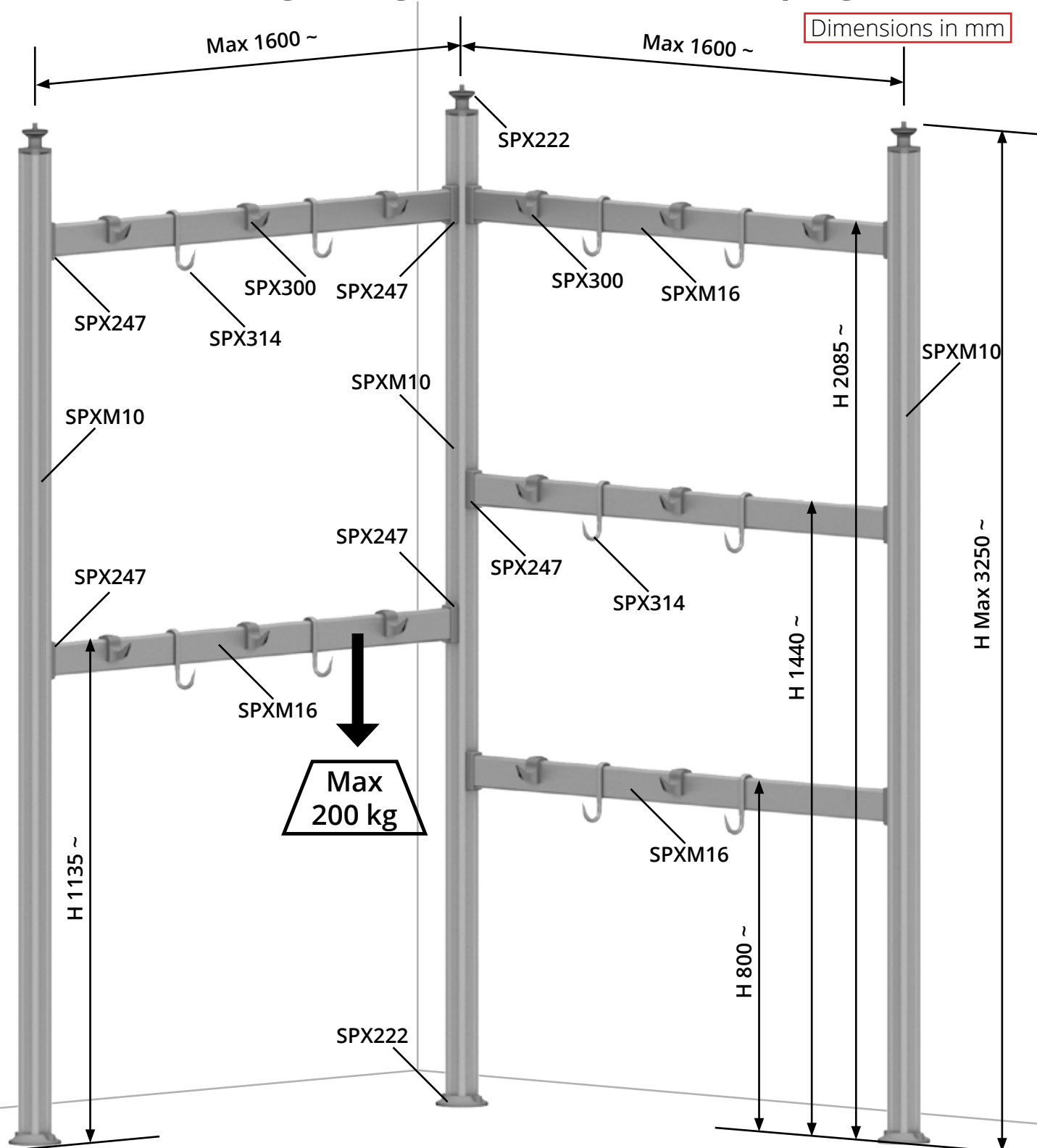
SPX313
"S" shaped stainless steel hook H 160 mm, Ø 6 mm,
for hanging bars



SPX314
Stainless steel hook Ø12 mm, for hanging bars

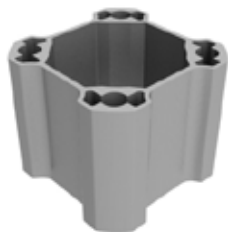


Floor / ceiling hangers mounted on uprights



Floor / ceiling

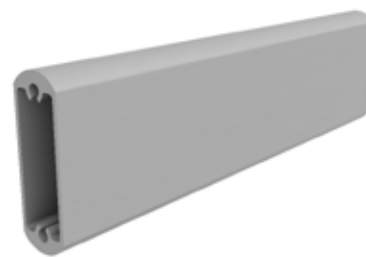
Hangers mounted on uprights



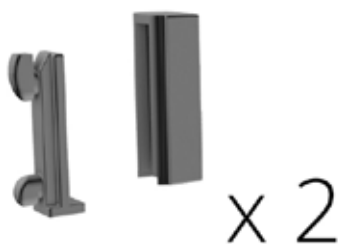
SPXM10
Upright 62 x 62 mm tallmade in 20 micron anodized aluminium



SPX222
Fixed base Ø 120 mm in thermoplastic material + adjustable base Ø 60 mm for wall / ceiling hanger



SPXM16
Hanging bar 75 x 25 mm in 20 micron anodized aluminium



SPX247
Pair of fixing brackets for hanging bar 75 x 25 mm in nylon 6 with upright 62 x 62 mm



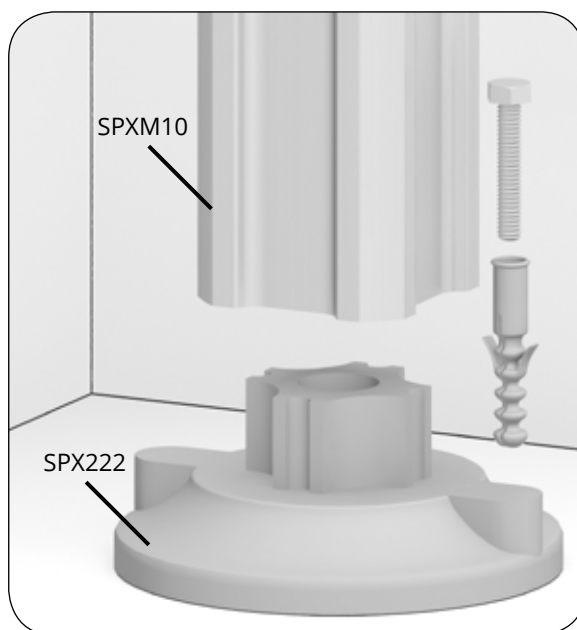
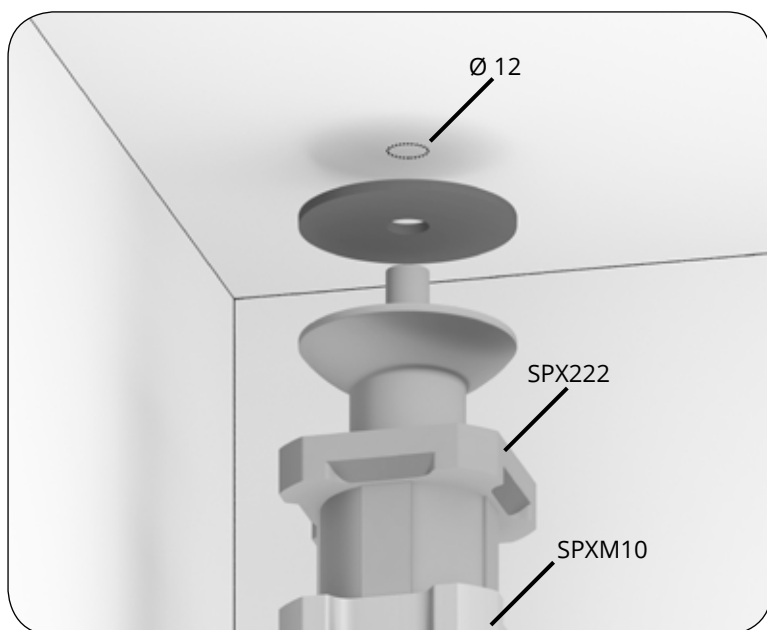
SPX300
Hook in thermoplastic material 50 kg load capacity for hanging bars



SPX313
"S" shaped stainless steel hook H 160 mm, Ø 6 mm, for hanging bars

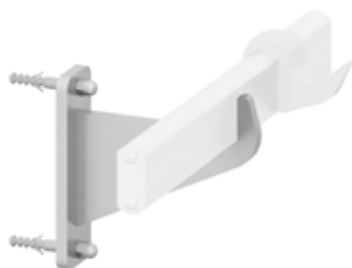
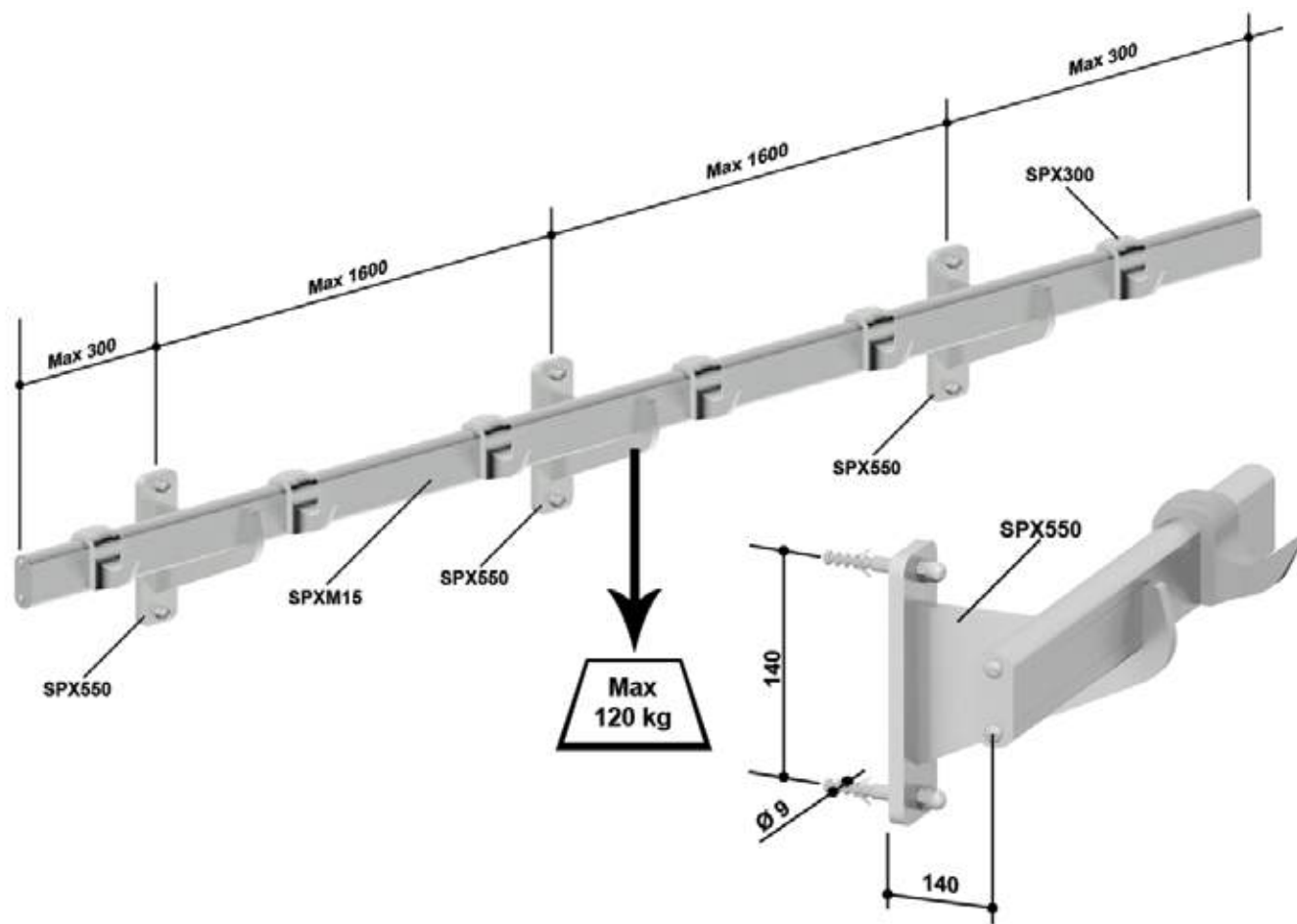


SPX314
Stainless steel hook Ø12 mm, for hanging bars



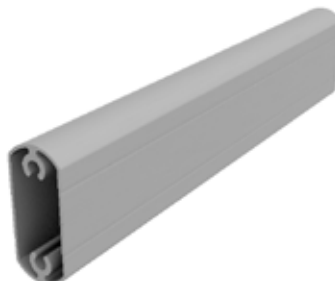
Wall hangers

Dimensions in mm



SPX550

Bracket for direct fixing of 60 x 25 mm hanging bar to the wall D140 mm (plugs included)



SPXM15

Hanging bar 60 x 25 mm in 20 micron anodized aluminium



SPX300

Hook in thermoplastic material 50 kg load capacity for hanging bars



SPX313

"S" shaped stainless steel hook H 160 mm, Ø 6 mm, for hanging bars



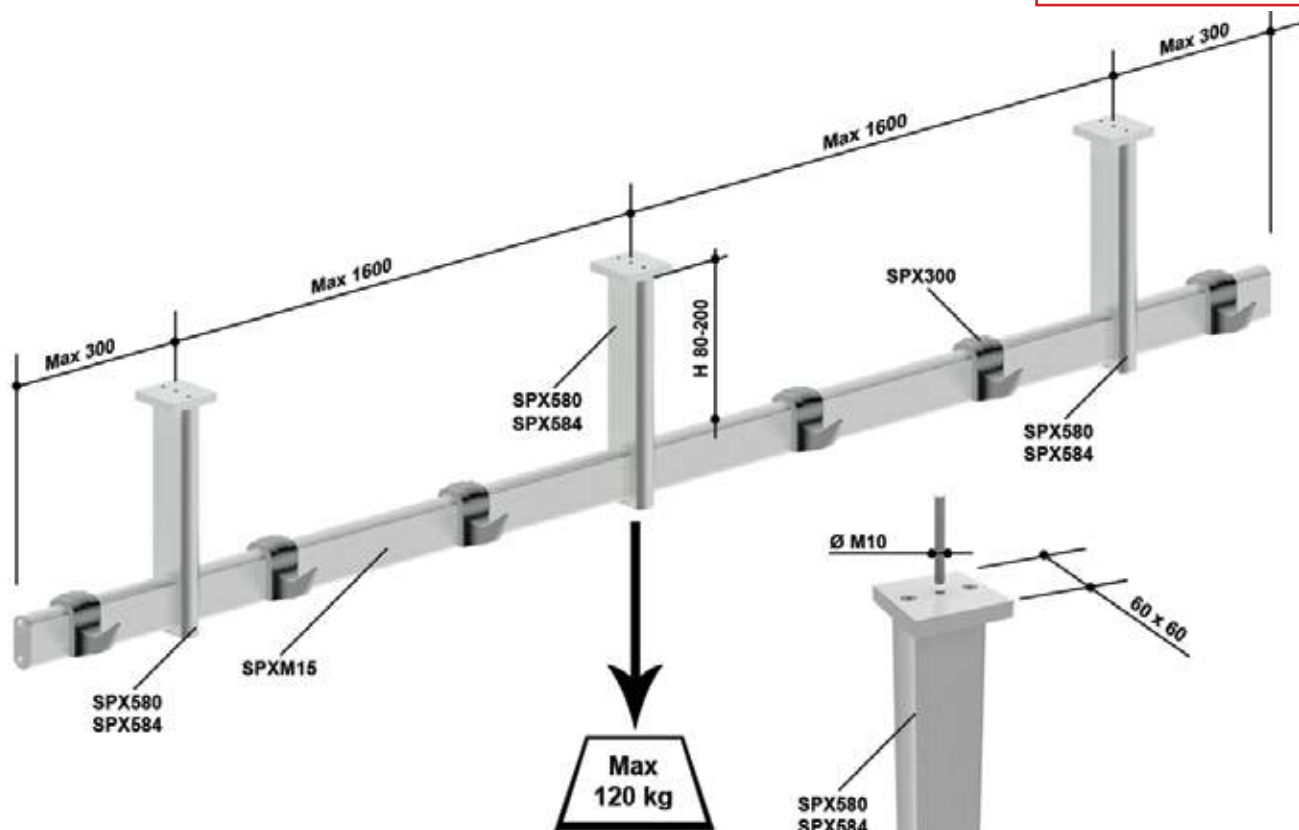
SPX314

Stainless steel hook Ø12 mm, for hanging bars

Ceiling hangers

Ceiling / wall hangers

Dimensions in mm



SPX580
Direct ceiling joint H80 mm
in 20 micron anodized aluminium
(threaded rod 10MA not included)



SPX584
Direct ceiling joint H200 mm
in 20 micron anodized aluminium
(threaded rod 10MA not included)



SPXM15
Hanging bar 60 x 25 mm in 20 micron
anodized aluminium



SPX300
Hook in thermoplastic material 50 kg load capacity
for hanging bars



SPX313
"S" shaped stainless steel hook H 160 mm, Ø 6 mm,
for hanging bars

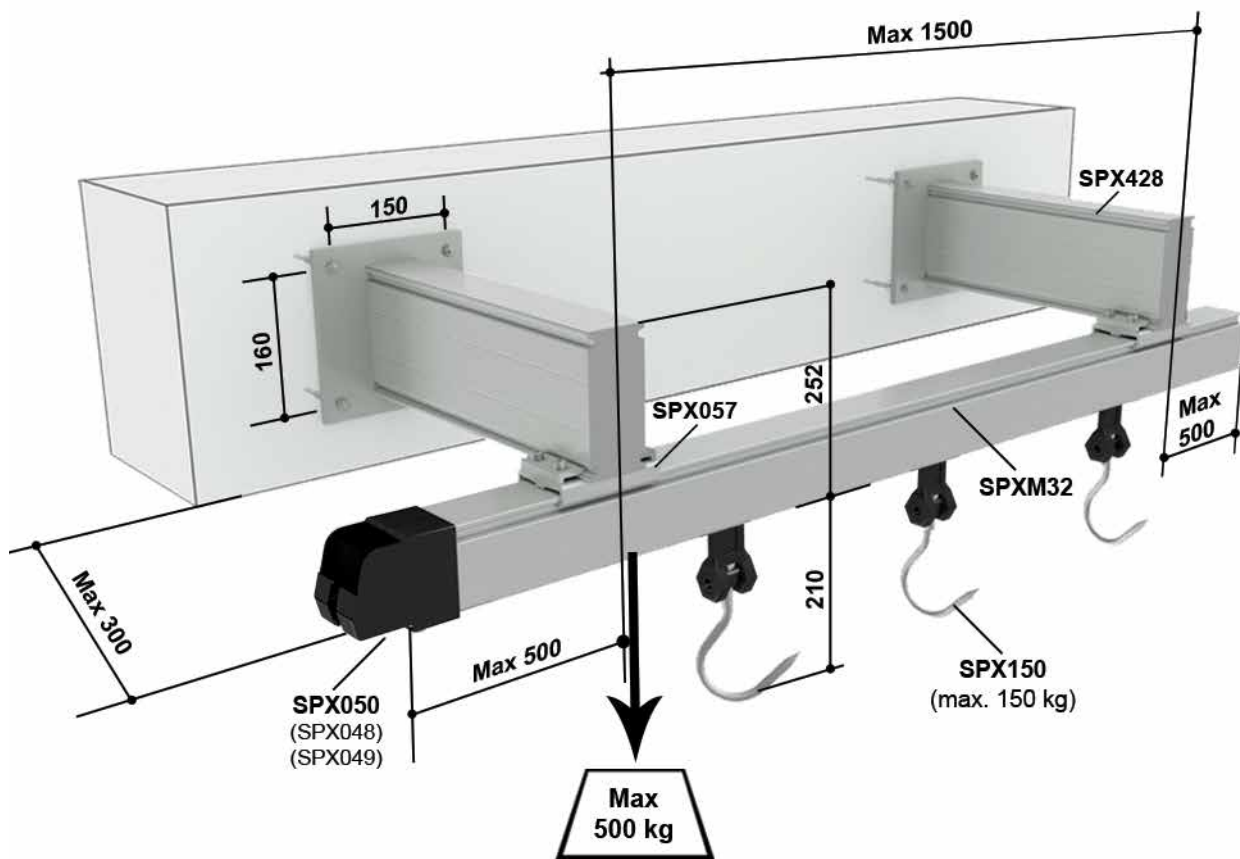


SPX314
Stainless steel hook Ø12 mm, for hanging bars



Wall mount sliding hangers

Dimensions in mm





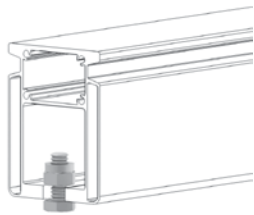
SPXM32

Meat rail H 90 x 70 mm in 20 micron anodized aluminium (CUT ONLY)



SPX428

Stainless steel shelf depth 300 mm for meat rail support, to be fixed to the wall (plugs not included)



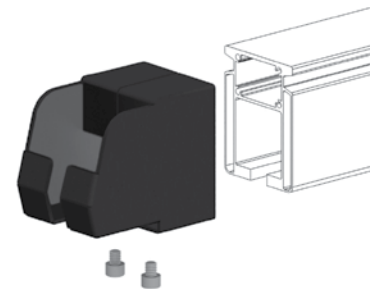
SPX048

Stainless steel terminal pulley block on meat rail



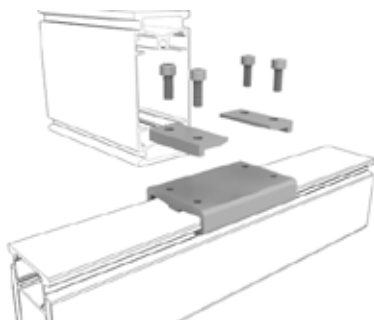
SPX049

Tilting steel terminal for pulley insertion



SPX050

Steel terminal for pulley insertion



SPX057

Cross clamp in 20 micron anodized aluminium for meat rail/beam fixing

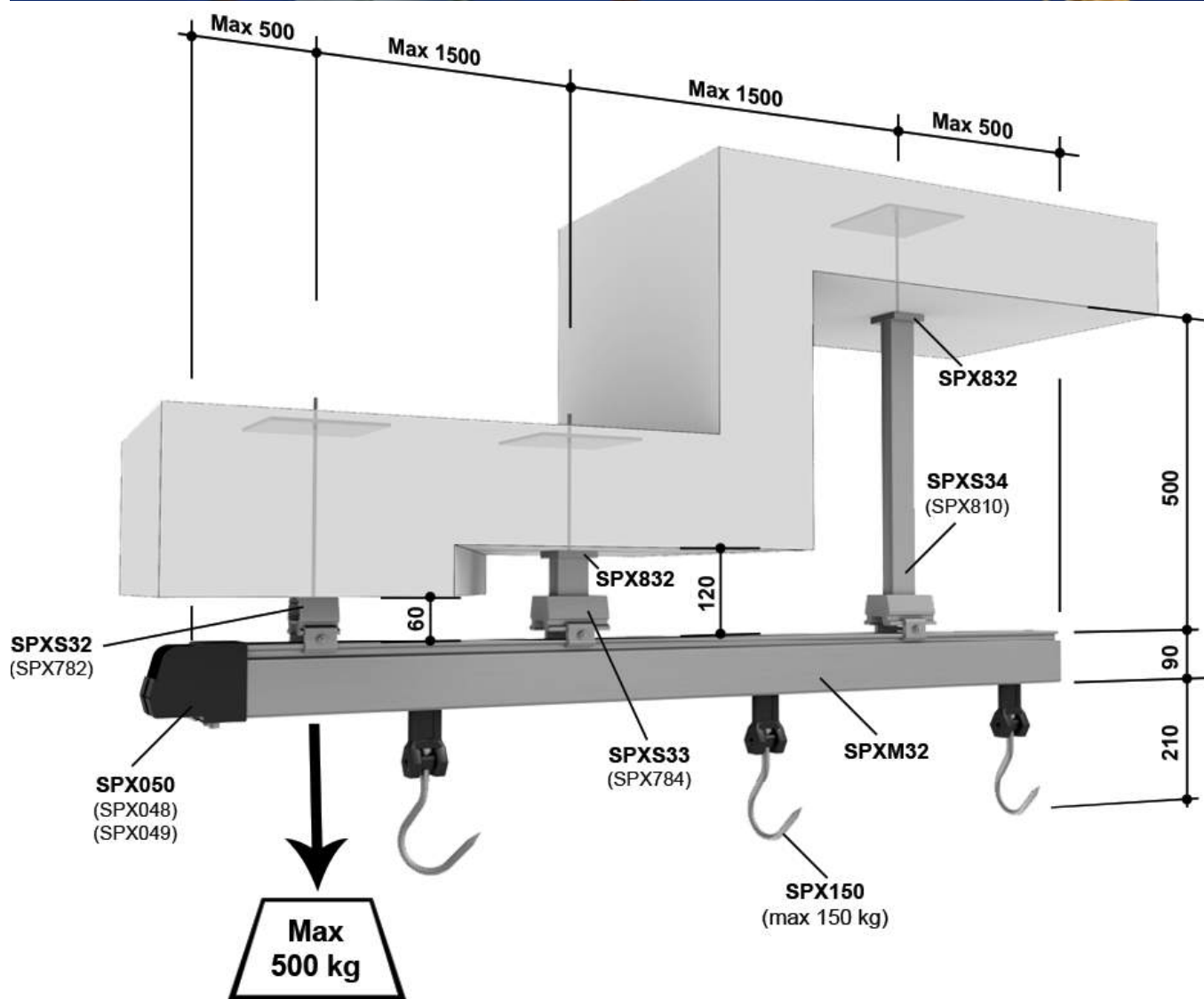


SPX150

SIMPLEX pulley, 150 kg load capacity with hook Ø 12 mm in stainless steel

Ceiling mount sliding hangers

Dimensions in mm





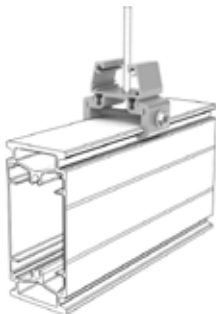
SPXM32

Meat rail H 90 x 70 mm in 20 micron anodized aluminium (CUT ONLY)



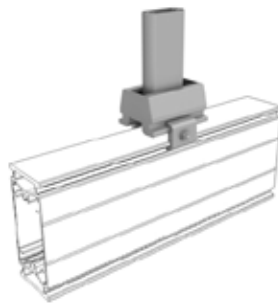
SPX150

SIMPLEX pulley, 150 kg load capacity with hook Ø 12 mm in stainless steel



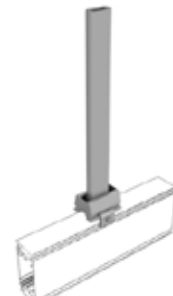
SPXS32

Direct ceiling joint H 60 mm in 20 micron anodized aluminium



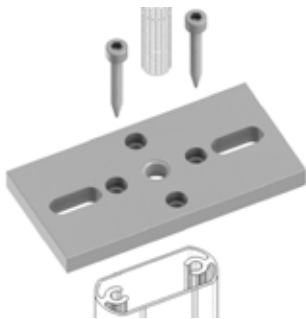
SPXS33

Ceiling mount tie rod H 120 mm in 20 micron anodized aluminium



SPXS34

Ceiling mount tie rod H 500 mm in 20 micron anodized aluminium



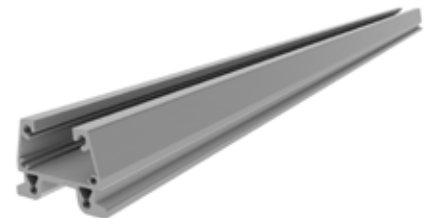
SPX832

Tie rods anchoring plate for ceiling fixing (plugs not included) in 20 micron anodized aluminium



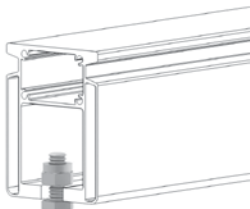
SPX060

Stainless steel threaded rod 10MAx215 mm for direct ceiling joint



SPXM70

20 micron anodized aluminium beam for load distribution to ceiling H 60 x 68 mm (max length 3000 mm)



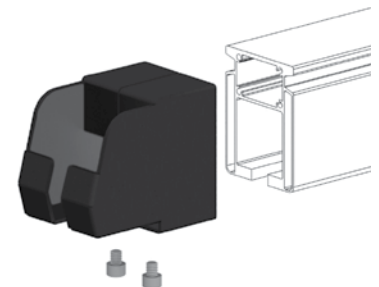
SPX048

Stainless steel terminal pulley block on meat rail



SPX049

Tilting steel terminal for pulley insertion



SPX050

Steel terminal for pulley insertion